

› eex group

EEX Group DataSource  
Desktop App  
- User Guide

Desktop App  
23.08.2019  
Leipzig

Ref. 0003

## Table of Contents

<b>1.</b>	<b>Symbols</b>	<b>4</b>
1.1	Symbology	4
1.2	Month Codes	6
1.3	Symbol Search	6
1.4	The symbol Tree	8
<b>2.</b>	<b>Getting Started</b>	<b>13</b>
2.1	Launching EEX Group DataSource Desktop App	13
2.2	EEX Group DataSource Workspaces	15
<b>3.</b>	<b>Quotes</b>	<b>16</b>
3.1	Quote Process	16
3.2	Selecting Quote Data Fields	16
3.3	Quote Field Definitions	18
3.4	Quote Preferences	20
<b>4.</b>	<b>History</b>	<b>23</b>
4.1	History Process	23
4.2	Currency / Unit Conversion	25
4.3	Selecting Historical Data Fields	27
4.4	Filling Missing Data	28
4.5	Historical Time Series	28
4.6	History Preferences	29
<b>5.</b>	<b>Charts</b>	<b>31</b>

---

5.1	Chart Process	31
5.2	Chart Type and Color	32
5.3	Trendlines	35
5.4	Studies	37
5.5	Charts Data Display	40
5.6	Axis Settings	41
5.7	Continuation Charts	43
<b>6.</b>	<b>Curve</b>	<b>44</b>
6.1	Curve Process	44
6.2	Curve Display Preferences	45
6.3	Linked Forward Curves	47
<b>7.</b>	<b>Options</b>	<b>48</b>
7.1	Option Process	48
7.2	Option Parameters	51
7.3	Option Display Preferences	51
<b>8.</b>	<b>Scrolling News</b>	<b>53</b>
8.1	Scrolling News Process	53
8.2	Scrolling News Display Preferences	53
<b>9.</b>	<b>Fixed News</b>	<b>55</b>
9.1	Fixed News Process	55
9.2	Fixed News Display Preferences	55
<b>10.</b>	<b>Alerts</b>	<b>57</b>

# 1. Symbols

## 1.1 Symbolology

Symbolology is the interpretation of how symbols are configured. Knowing the symbolology, will assist you when creating a quote query or when configuring an historical table.

### Formatting EEX Group Market Data

EEX Group Market Data Symbols are composed as follows:

*/E.PRODUCTCODE FOR EMISSION SPOT AND ALL FUTURES*

*-E.PRODUCTCODE FOR OPTIONS*

*#E.PRODUCTCODE FOR GAS SPOT*

*\$E.PRODUCTCODE FOR INDICES*

*#EEXT.CODES FOR TRANSPARENCY DATA*

EEX Group Market Data Symbols for Emission Spot and all Futures contracts are prefaced with a /E. followed by the root, month code, then year.

EEX Group Market Data Symbols for Options contracts are prefaced with a -E. followed by the root, month code, then year.

EEX Group Market Data Symbols for Emission and Gas Spot contracts are prefaced with a #E. followed by the root.

EEX Transparency Data are prefaced with a #EEXT. followed by the root for time series. Events will be available as News.

Example:

- /E.DEBMH19 where
  - DEBM = Phelix DE Base Load Month Futures
  - H = March
  - 19= 2019

**NOTE:** The /E. in front of the symbol root specifies the EEX Group trading session.

**Rolling Futures:** Rolling futures symbols automatically change the contract on contract expiration. A nearby for the EEX Group session is the root preceded by '/E.' and followed by <numeric month out>.

Examples:

- /E.DEBM<0> Phelix DE Base Load Month Futures – Current Month
- /E.DEBM<1> Phelix DE Base Load Month Futures – Front Month
- /E.DEBM<2> Phelix DE Base Load Month Futures – One Months Out

**Rolling Futures – Alias:** An alias represents the current contract and will change as the contracts roll. An alias is the root preceded by '/E.' and followed by [numeric month out].

Examples:

- /E.DEBM[0] Phelix DE Base Load Month Futures – Front Month. NOTE: On a QUOTE query, /E.DEBM<0> and /E.DEBM [0] will return the same data
- /E.DEBM[1] Phelix DE Base Load Month Futures – Front Month

**Rolling Futures – Continuous Months:** (HISTORICAL QUERY ONLY) Rolling futures symbology for a particular delivery month is the root <month>. (Note the month is entered by its first three letters and is not case sensitive.) This pulls the most current trading contract. To access a month beyond the most current month, use the root <month +number of years out>. Both symbologies follow similar formats for different symbols.

Examples:

- /E.DEBM<JAN> Phelix DE Base Load Month Futures January
- /E.DEBM<JAN+1> Phelix DE Base Load Month Futures 2nd January out continuous
- /E.DEBM<JAN+2> Phelix DE Base Load Month Futures 3rd January out continuous

## Futures Symbology - Examples

Description	Root	Symbol	Example
<b>EEX Group /E.</b>			
<b>Phelix DE Base Month Futures</b>	/E.DEBM	/E.DEBMmyy	/E.DEBMN19 July 2019
<b>Gaspool Natural Gas Month Futures</b>	/E.G2BM	/E.G2BMmyy	/E.G2BMN19 July 2019
<b>EEX Transparency #EEXT.</b>			
<b>EEX Available Capacity – Austria – Biomass</b>	#EEXT.AC.PMWD.AT-LGNT	-	-
<b>EEX Generation Quantity - Germany</b>	#EEXT.GQC.PMWH-DE	-	-

Please use the long name for selecting EEX Transparency Data.

## 1.2 Month Codes

The following month codes are used to configure commodity symbols

Example:

- /E.DEBMN19 July 2019

**Month Codes**

January	F
February	G
March	H
April	J
May	K
June	M
July	N
August	Q
September	U
October	V
November	X
December	Z

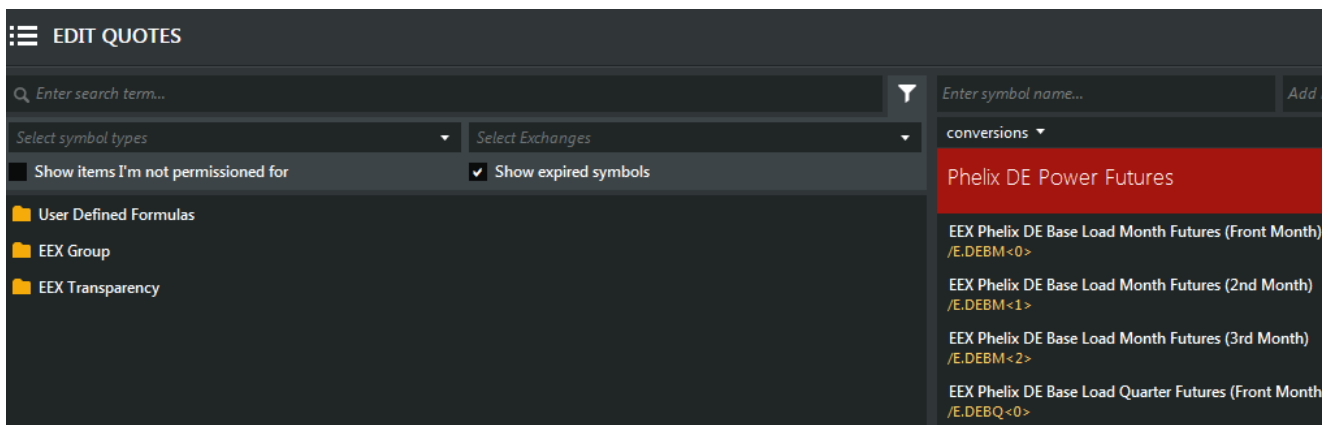
## 1.3 Symbol Search

The Symbol box allows you to enter a word or phrase to assist you in finding the desired symbols. Enter the word or phrase in the top left part of the component where it says “Enter symbol...”. The results are displayed in a drop down directly below the symbol box.

1. To start, click on EDIT within the component chosen

Symbol	Description	Last	Net Chan...	% Change	High	Low	Volume	Open Interest
<b>Phelix DE Power Futures</b>								
/E.DEBM<0>	EEX Phelix DE Base Load Month Futures (Front Month)							137212
/E.DEBM<1>	EEX Phelix DE Base Load Month Futures (2nd Month)	37,75	▲	0,05	▲	0,13	37,95 37,20	1119 142191
/E.DEBM<2>	EEX Phelix DE Base Load Month Futures (3rd Month)	39,30	▲	0,21	▲	0,54	39,35 39,10	107 6916
/E.DEBQ<0>	EEX Phelix DE Base Load Quarter Futures (Front Month)	41,05	▲	0,30	▲	0,74	41,25 40,75	294 122019
/E.DEBQ<1>	EEX Phelix DE Base Load Quarter Futures (2nd Month)	44,80	▼	0,14	▲	0,31	45,15 44,75	126 107882
<b>French Financial Power Futures</b>								
/E.F7BM<0>	EEX French Financial Base Load Month Futures (Front...							26340
/E.F7BM<1>	EEX French Financial Base Load Month Futures (2nd...	41,000	▲	0,290	▲	0,71	41,000 41,000	107 27827

- Next, enter a part of the symbol's description, such as "Phelix" in the search box where it reads "enter search term..."



As you continue to enter more letters in the Search box, the results are screened more finely.

- To select ONE contract, double-click on the desired symbol to move it into the Selected Symbols box on the right.
- To select MULTIPLE symbols, hold your CTRL key, and click on each symbol. When you have all of the desired symbols selected, press the ENTER key to move the range to the right side.
- To select a RANGE of symbols, hold your SHIFT key, and click the first symbol in the range you want. Then, click the last symbol in the range. (All of the symbols in the range will be highlighted). Press the ENTER key to move the range to the right side.

NOTES: The Symbol Tree remembers the last exchange/category you navigated and will display your most recent symbol choices next time you access the dialog box.

Symbols MAY be added to the right “selected symbols” box multiple times. This allows you to add the symbol to your spreadsheet using different units of measure or currencies. This is helpful if you wish to view the price data for one symbol using different currencies or units of measure

## 1.4 The symbol Tree

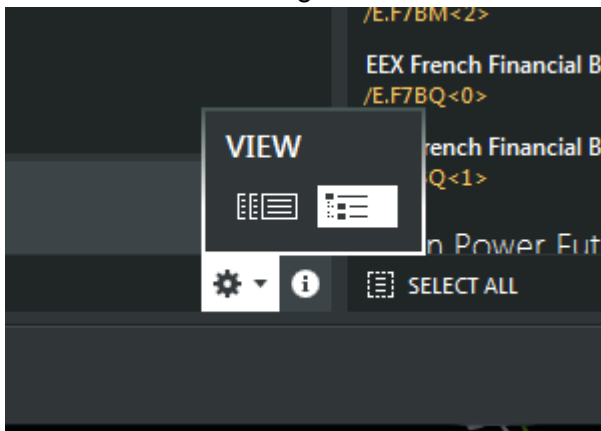
The Symbol Tree/Symbol Slider allows you to scroll through all the available exchanges and data categories to find the symbols you want for your query. It will also display any User-Defined Formulas saved. The Symbol Tree is accessed through the Edit Dialog Box, and has a number of settings available.

### Settings

You have the option of changing the amount of data to display and the way in which the tree appears by accessing the settings.



1. Click the Settings icon.



2. Click on the desired **View**.

Slider View  
(folders)

Tree View – (“Windows-styled”)



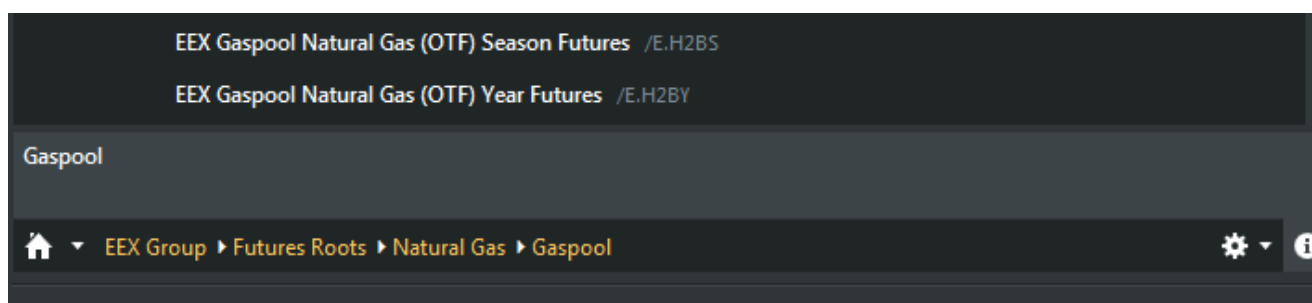
### 3. Filters:

**1.Show items I'm not permissioned for:** When CHECKED, you will see ALL symbols, even those for exchanges you are not permissioned to receive. If you add an unpermissioned symbol to your query, no data will be returned.

**2.Show expired symbols:** When CHECKED, you will see ALL symbols, even those that have expired. If you add an expired symbol to your query, not data will be returned.

### Finding Symbols in the Tree/Slider

Symbols are grouped by exchange or category. Your Filter settings will be shown at the bottom of the tree:

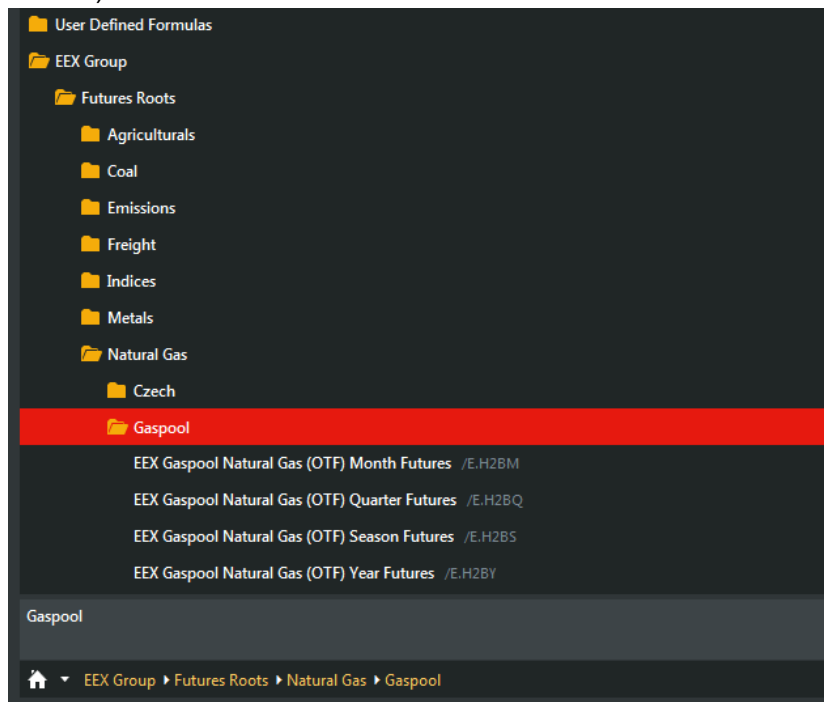


You may change your Filters by clicking on the **Settings icon**. 

In the example below, we've drilled down to **Gaspool**. To see other the commodities found in EEX Group, **double-click** on the name-. The Symbol Tree opens to show you the commodities included. **Double-click** on the desired commodity.

Slider View  
folders)

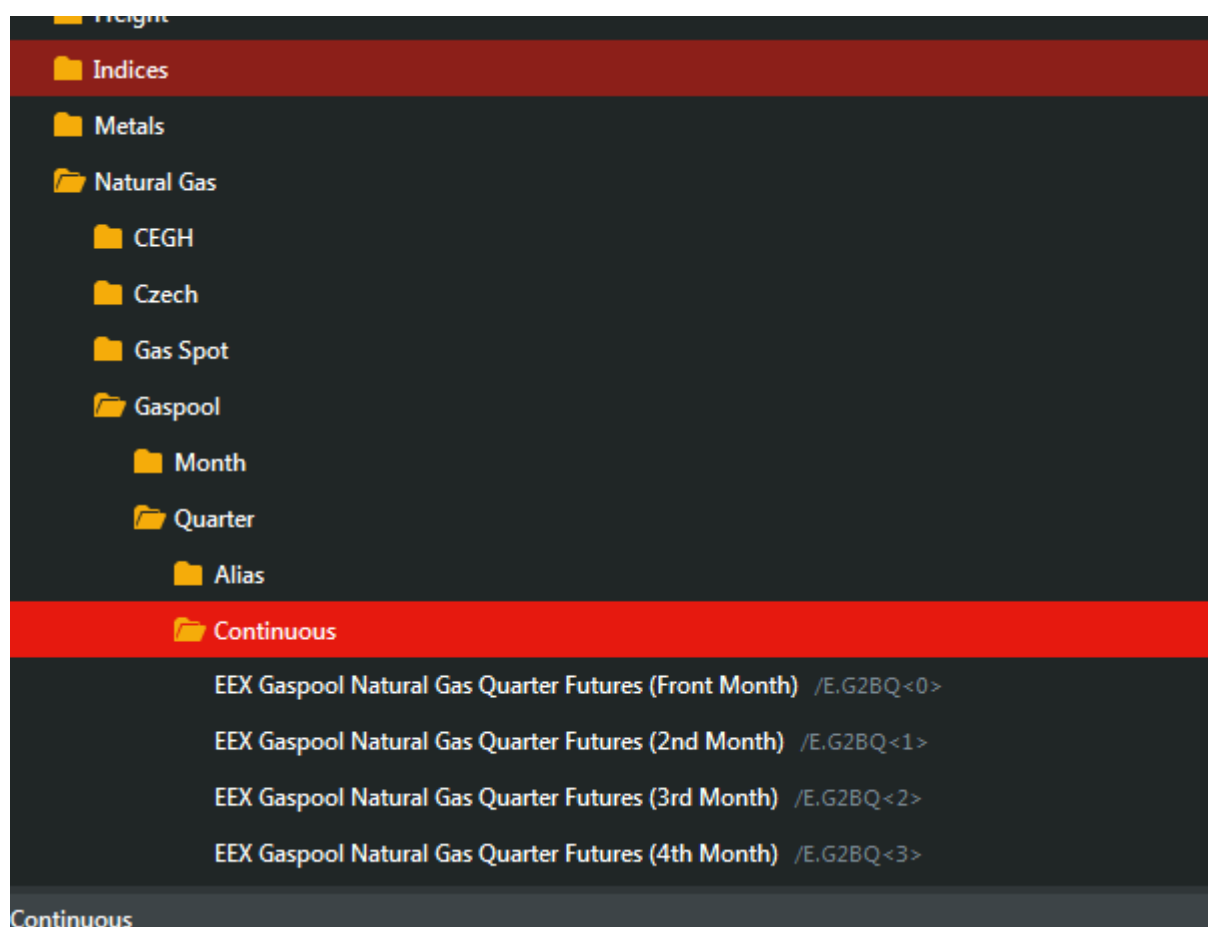
Tree View – (“Windows-styled”




You'll continue to go deeper into the tree:

Slider View  
folders)

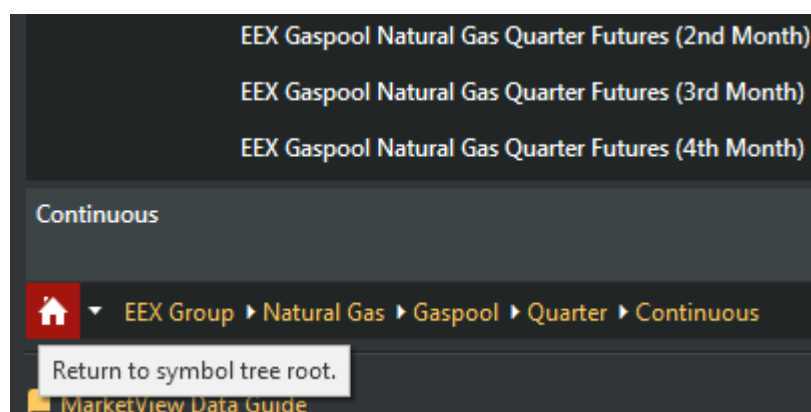
Tree View – (“Windows-styled”



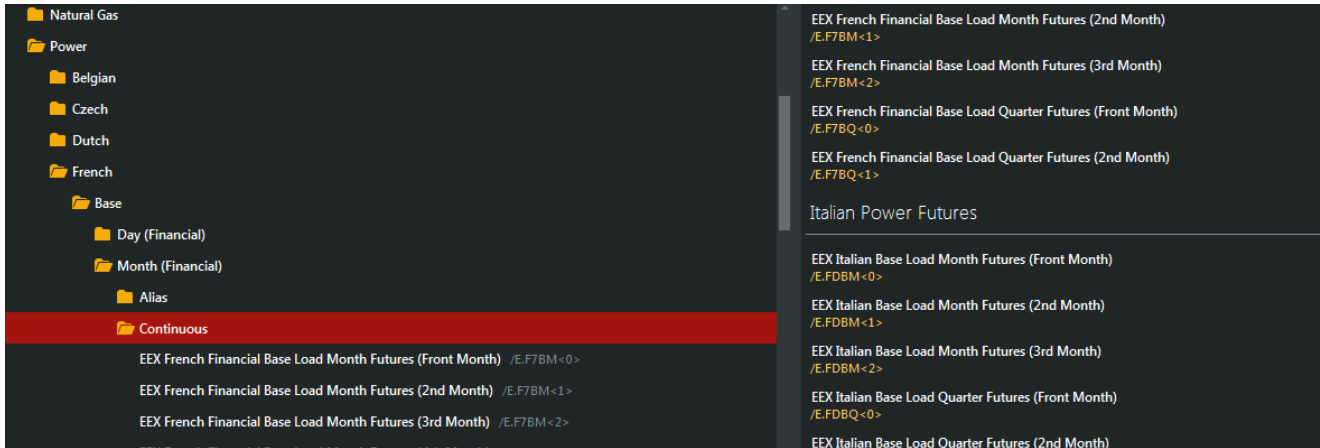
You can always move BACK one step by clicking the < arrow, or go all the way back to the start of the Tree by clicking the  HOME button:

Slider View  
folders)

Tree View – (“Windows-styled”



Continue through the tree until you find the symbol you want. To move it to the box on the right (your selected symbols), **double-click** on the symbol or simply click on it once and then press ENTER



To select **MULTIPLE** symbols, hold your **CTRL key**, and click on each desired symbols. When you have all of the desired symbols selected, press your **ENTER key** to move the range to the right side of the dialog box.

To select a **RANGE** of symbols, hold your **SHIFT key**, and click the first symbol in the range you want. Then, click the last symbol in the range. (All of the symbols in the range will be highlighted). Press your **ENTER key** to move the range to the right side of the dialog box.

The Symbol Tree remembers the last exchange/category you navigated, and the next time you initiate a Quotes, Chart, or Historical query it will display your most recent symbol choices.

## 2. Getting Started

### 2.1 Launching EEX Group DataSource Desktop App

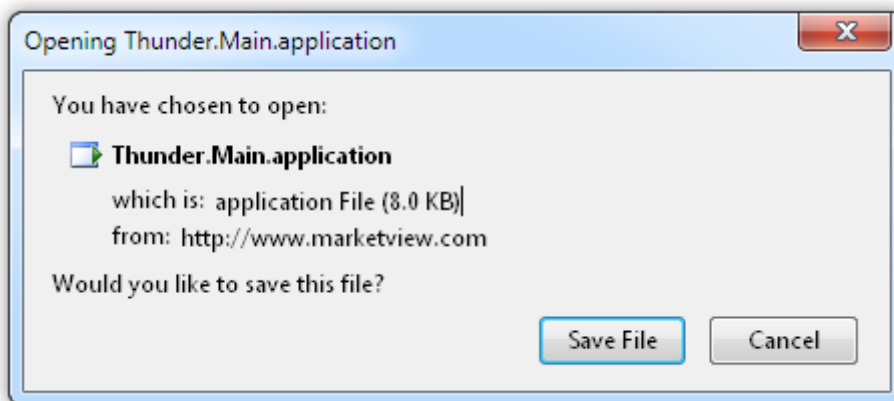
Follow the steps below to launch the EEX Group DataSource Desktop App

1. Click on the following link:

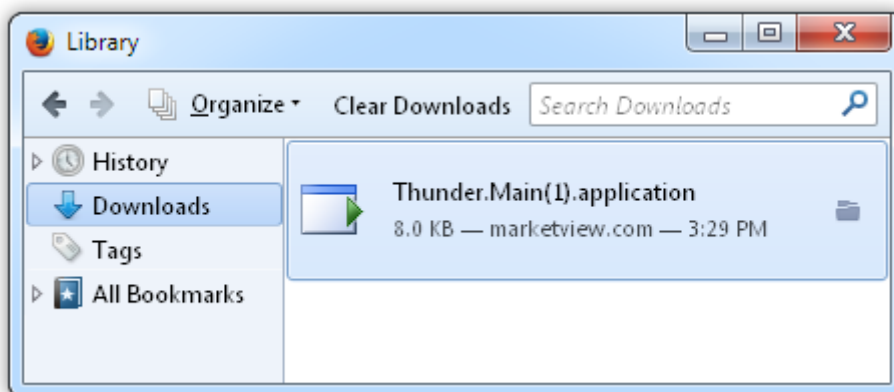
<https://www.marketview.com/launch/eexdesktop6/Thunder.Main.application>



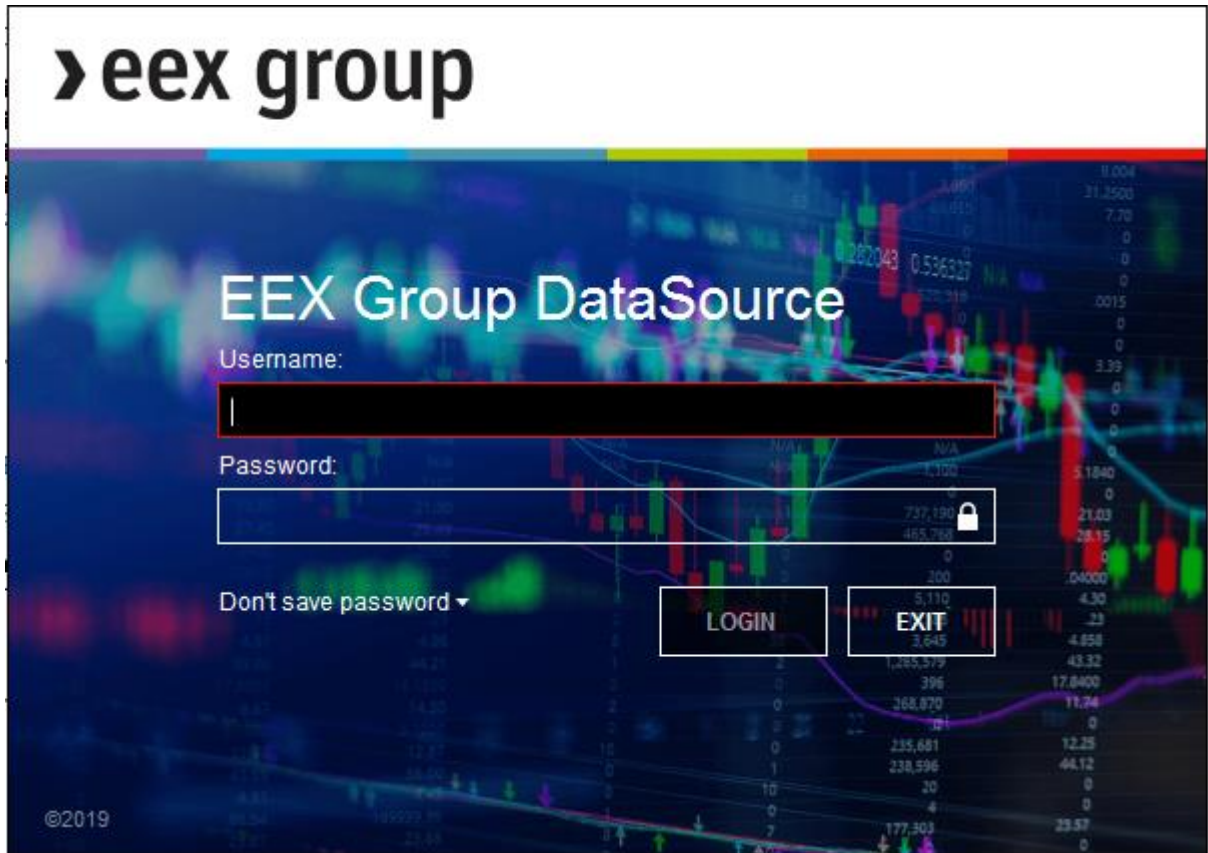
2. Save the file Thunder.Main.application



3. Double click on the download

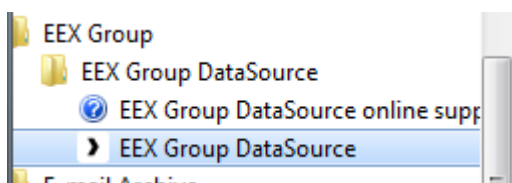


4. The login box will appear next.



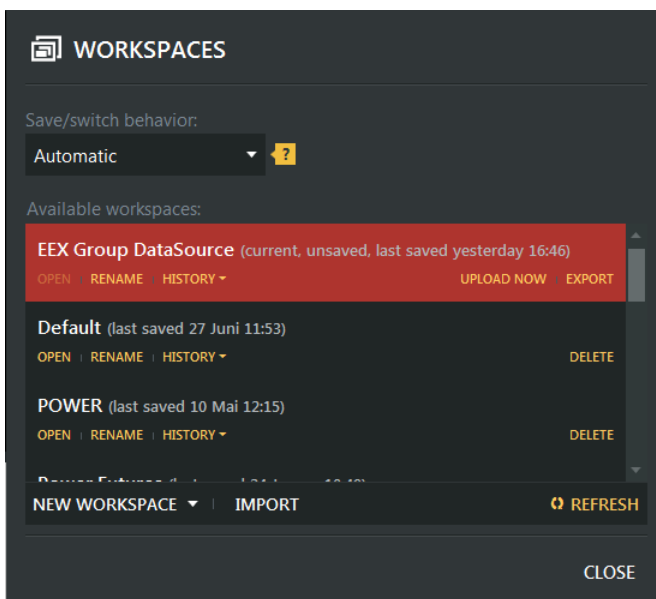
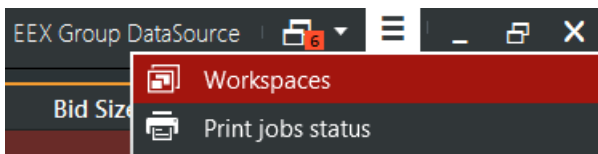
You will only have to go through this process once. After the EEX Group DataSource Desktop App has been launched once it installs a short cut in the start menu.

1. Click on the start menu
2. Find the EEX Group folder
3. Select EEX Group DataSource



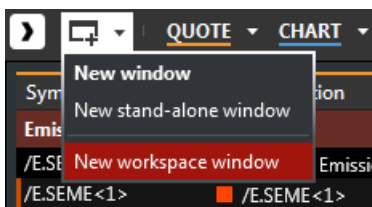
## 2.2 EEX Group DataSource Workspaces

Customers are provided with one workspace which includes several pages with EEX Group commodities and EEX Transparency Data. This preset can be amended or even deleted by the customers. Customers can create new ones. Exporting of data allows to save the configured workspace, to import it again or to send it to other users.



### Multiple Workspace Windows

Multi-monitor setups can now be better utilized with additional workspace windows.



### 3. Quotes

#### 3.1 Quote Process

The EEX Group DataSource real-time Quotes interface gives you access to all of your energy publication data as it happens. When you initiate a Quote query, EEX Group DataSource displays a tabular representation of the real-time streaming data for the contracts you've identified. Data is displayed in each column based on the field choices you make when you set up the query.

Symbol	Description	Last	Net Chan...	% Change	Bid	Ask	High +	Low	Volume	Open In
<b>Phelix DE Power Futures</b>										
/E.DEBM<0>	EEX Phelix DE Base Load Month Futures (Front Month)									1
/E.DEBM<1>	EEX Phelix DE Base Load Month Futures (2nd Month)	37,80	▲ 0,10	0,27	37,67	38,14	37,95	37,20	1236	1
/E.DEBM<2>	EEX Phelix DE Base Load Month Futures (3rd Month)	39,40	▲ 0,31	0,79	39,30	39,47	39,40	39,10	124	1
/E.DEBQ<0>	EEX Phelix DE Base Load Quarter Futures (Front Month)	41,10	▼ 0,35	0,86	41,13	41,31	41,30	40,75	326	1
/E.DEBQ<1>	EEX Phelix DE Base Load Quarter Futures (2nd Month)	45,20	▲ 0,54	1,21	45,10	45,24	45,20	44,75	145	1
<b>French Financial Power Futures</b>										
/E.F7BM<0>	EEX French Financial Base Load Month Futures (Front...									
/E.F7BQ<1>	EEX French Financial Base Load Quarter Futures (2nd...	45,400	▲ 0,150	0,33	45,550	46,040			7	
/E.F7BM<1>	EEX French Financial Base Load Month Futures (2nd...	40,800	▲ 0,090	0,22	41,000	41,150	41,000	41,000	139	
/E.F7BM<2>	EEX French Financial Base Load Month Futures (3rd M...	41,000	▲ 0,100	0,24	40,900	41,500	41,000	41,000	116	
/E.F7BQ<0>	EEX French Financial Base Load Quarter Futures (Front...	41,200	▲ 0,220	0,54	41,200	41,640	41,300	41,150	38	
<b>Italian Power Futures</b>										
/E.DEB	/E.DEB									
/E.FDBM<0>	EEX Italian Base Load Month Futures (Front Month)									
/E.FDBQ<1>	EEX Italian Base Load Quarter Futures (2nd Month)	59,800	▲ 0,800	1,36	59,300	59,940			37	

The process of adding a Quote query to your EEX Group DataSource page is simple: specify the desired symbols and select the data fields you want. Once the query is set, new data is automatically updated into your page.

Follow these steps:

- Initiate a Quote query by clicking on the Quote icon.
- Select symbols to display.
- If you know the specific symbols, enter them directly.
- If you don't know the specific symbols, use the **Search** or **Symbol Tree** to find them.
- Identify the columns / data fields you wish to display using the **field selector**.
- Choose additional display settings (grid style, fonts, and colors).

#### 3.2 Selecting Quote Data Fields

Data fields are used to specify the data that will be placed in each column. The process for selecting fields and their definitions are listed below.

Process for selecting fields:


1. Create a **Quote** query
2. Right click on the top row which contains the default fields.
3. The Quote field dialog box will then pop up.

Common	Symbol Data	Prices	Quantities	Dates & Times	Prev. Prices	Options
Symbol	Symbol	Last	Last Size	Trade Time	Prev Price	Put/Call
Description	Description	Bid	Bid Size	Bid Time	Prev Price 2	Strike
Last	Category	Ask	Ask Size	Ask Time	Prev Price 3	Option Root
Tick Dir.	Security Type	Mid Point	Volume	Close Date	Prev Price 4	ImpVol
Net Change	Conversions	Open	Prev Volume	Settle Date	Prev Open	Δ (Delta)
Net Change Dir.	Contract Date	High	Historic Volume	Settle Update	Prev High	Γ (Gamma)
% Change	Exp. Date	Low		Prev Settle Upd...	Prev Low	ρ (Rho)
Trade Time	Currency	Close		MRV Date	Prev Close	Θ (Theta)
Close	LotUnit	Settle		Block Trade Time		v (Vega)
Settle	Underlier	Net Change		Start Time		TheoVal
Volume	Lot Size	% Change		End Time		
Open Interest	Conv.Factor	Most Recent V...		Session Start		
Exp. Date	Units	Block Trade		Session End		
Most Recent V...	Other					ISO Data
MRV Date	Open Interest	User Comment	Quote Update...	Location	Session	Aggregate
	Tick Dir.	Tick Count	Exchange ID	Market	Current Session	Peak Aggregate
	Net Change Dir.	Chg.Last	Exchange Code	Region		Off Peak Aggre...

Sorting... (1) High ↑

✕ clear sorting

CLOSE

4. Check or uncheck the box next to the field you would like to add or remove.
5. See **Field Definitions** for a detailed description of each field.
6. Click the  to close the Quote field dialog box.
7. Save your changes.

### 3.3 Quote Field Definitions

Below is a description of each field ID:

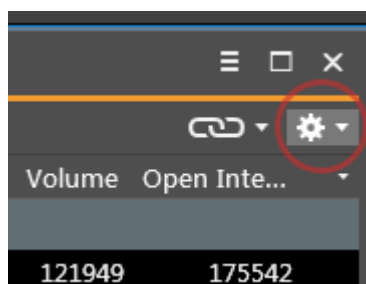
Display Field	Description	Field IDs (FIDs)
Ask	The price at which the contract is offered for sale.	Ask, a
Ask Date	The date on which the contracts are offered for sale.	AskDate
Ask Size	The number of contracts being offered for sale at the Ask price.	AskSize
Ask Time	The time the ask price was issued.	AskTime
Bid	The price at which the contract is wanted for purchase.	Bid, b
Bid Date	The date on which the the contracts are requested for purchase.	BidDate
Bid Size	The number of contracts wanted for purchase at the Bid price.	BidSize
Bid Time	The time the bid price was issued.	BidTime
Close	The closing (settlement) price for the previous session.	Close, pc, prevclose, previoussettle, prevsettle
Close Date	The closing date for the selected trading session.	CloseDate, pcd, prevclosedate, prevsettledate, previoussettledate
Contract Date	The first day on which a contract is offered.	ContractDate, cd, cdate, contract
Currency	The currency in which the contract is traded.	Currency
Description	The description of the contract.	Description, desc, d
Expiration Date	The expiration date of the contract.	ExpirationDate, expiration, ed, expdate
High	The high price for the session.	High, h
Last	The last traded price (typically the same as Most Recent Value).	Last, p, price, lastprice
Lot Unit	The unit of measure in which the contract trades.	LotUnit
Low	The low price for the session.	Low, l

Mid Point	The Average Price for the session (High + Low / 2)	MidPoint, mp, mpoint
Most Recent Value	The most recent price as reported from the exchange (typically the same as Last).	MostRecentValue, mrv, recentvalue, lastvalue, recent
Most Recent Value Date	The date on which the Most Recent Value was reported.	MostRecentValuedate, mrvdate, recentvaluedate, lastvaluedate, recentdate
Net Change	The difference between the Most Recent Value and the Close.	NetChange, change, nc, netchg
Open	The open price for the session.	Open, o
Open Interest	The number of open positions for the contract.	OpenInterest, oi, opint
Percent Change	The Most Recent Value minus the Close, divided by the Close.	PercentChange, cp, changeperc, percchg
Prev High	The high price from the previous trading session.	PrevHigh, lasthigh, previoushigh
Prev Low	The low price from the previous trading session.	PrevLow, lastlow, previouslow
Prev Open	The opening price from the previous trading session.	PrevOpen, lastopen, previousopen
Prev Price	The price prior to the Last price.	PrevPrice, pp, previousprice
Prev Vol	The volume price from the previous trading session.	PrevVol, lastvol, prevvolume, previousvolume
Put/Call	Displays one of the following symbols: P = Put C = Call U = Underlier	PutCall, put/call, call/put
Settle	The official price at the end of the trading session.	Settle, s
Settle Date	The date for the end of the trading session.	SettleDate, sdate
Strike	The price of the underlying contract.	Strike, strikeprice
Tick Count	Shows the number of trades for the contract.	TickCount, tick, tc, tickct

Trade Date	The date of the trade.	TradeData, date, td
Trade Size	The number of contracts that were traded at the Last price.	TradeSize, ts, tvol, tradevol, tradevolume
Trade Time	The time the trade was executed	TradeTime, time, tt
Underlier	The commodity subject to delivery in the event the option is exercised.	Underlier
Volume	The number of contracts traded for the session.	Volume, tc, totalvol, tvol, vol

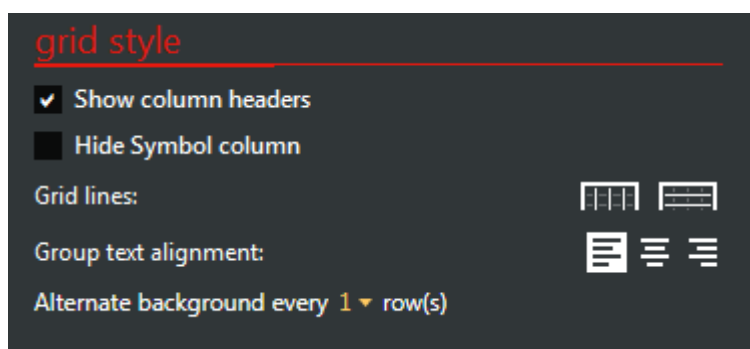
### 3.4 Quote Preferences

When creating a Quote query, you may choose display options by clicking on the cogwheel found in the upper right corner.



#### Grid Style

- Show column headers – When checked the field ID's are shown at the top of each column. Remove the check mark and the field ID's are removed.
- Grid lines – The first selection is for vertical lines separating each column while the second image on the right is for adding horizontal lines separating each row.
- Alternate background – Controls how often the background color of each row changes.



## Column Style

- Heat map mode
  - Disabled:
  - Text:
  - Background:
  - Net% change text:
  - Net%change background:
- Date/Time mode – Select the time zone you want displayed, UTC or your local time zone.
- Highlight tick updates – Any time a number changes in your table the background behind that cell will flash yellow.
- Show description instead of symbol when available – Select this to show the symbol description in the 'symbol' field.

data display

☒ Highlight tick updates
 ☐ Show description instead of symbol when available

Heat map mode	Net/% Change background ▼
Change Coloring Mode	Background ▼
Time zone to display:	Local ▼
Fractional price formatting:	Default ▼
General decimal precision:	Default ▼
Formula decimal precision:	0.1234 ▼

## Fonts and Colors

- Global text – Controls text format for all text in that window.
- Group row text – Controls the text format for grouped symbols.
- Background color – Changes the background color for that entire window.
- Group row background color – Controls the background color for grouped symbols.
- Alternating row background color – When alternating rows is selected this is the color that is used.

fonts & colors

Global text

Segoe UI (Regular)

12

B

I

Group row text

Segoe UI (Bold)

12

B

I

Background color

Group row background color

Alternating row background color

## 4. History

### 4.1 History Process

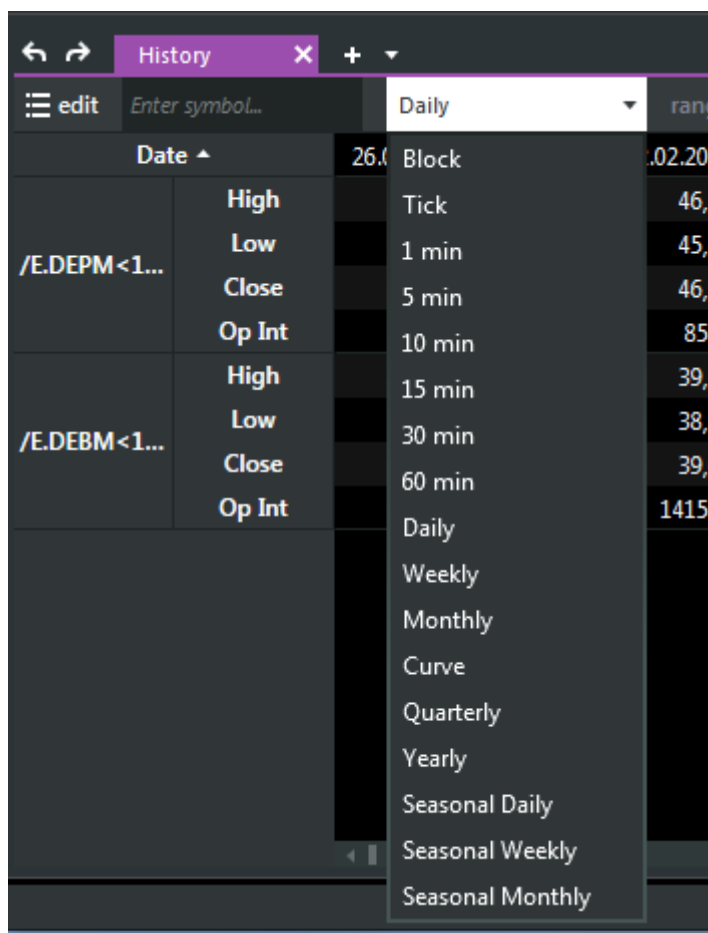
The EEX Group DataSource Historical Data interface allows you to create historical data tables with automated data filling methods, and optional unit and currency conversion.



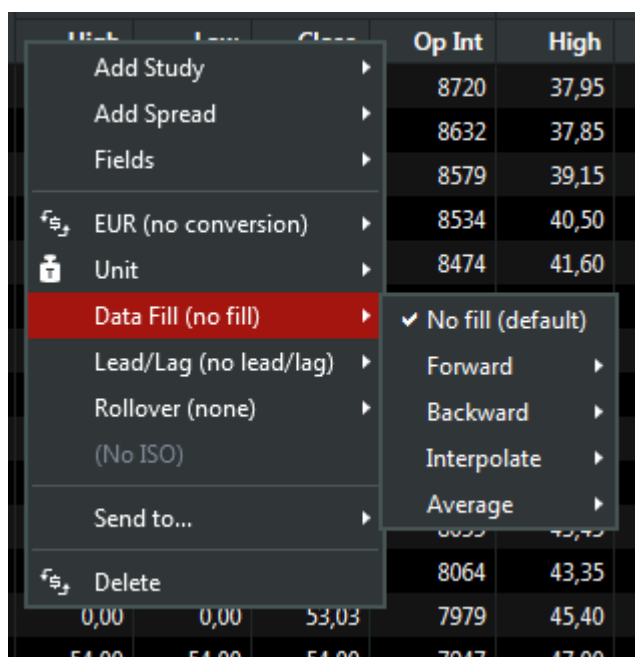
Date ^	/E.DEPM<1> - EEX Phelix DE Peak Load...				/E.DEBM<1> - EEX Phelix DE Base Load...			
	High	Low	Close	Op Int	High	Low	Close	Op Int
26.02.2019	0,00	0,00	0,00	8720	37,95	37,20	0,00	143593
25.02.2019	44,95	44,52	45,03	8632	37,85	36,95	37,70	142191
22.02.2019	46,25	45,50	46,13	8579	39,15	38,35	39,07	141538
21.02.2019	47,25	47,25	47,03	8534	40,50	39,50	39,98	140231
20.02.2019	48,65	48,65	48,20	8474	41,60	40,65	41,30	139458
19.02.2019	47,80	47,80	47,76	8371	41,00	40,30	40,70	138798
18.02.2019	47,75	47,30	47,45	8305	41,50	40,10	40,21	137798
15.02.2019	48,25	48,00	48,31	8151	41,50	40,93	41,50	137097
14.02.2019	49,50	48,90	48,81	8134	42,55	41,65	41,69	136606
13.02.2019	0,00	0,00	48,92	8134	42,50	41,63	41,88	135504
12.02.2019	50,00	50,00	49,95	8099	43,45	42,25	42,87	134680

The process of adding a historical table to your EEX Group DataSource page is simple: specify the desired symbols and select the data fields you want. Once the table is set, new data is automatically updated into your page.

- Initiate the query by clicking on the history icon.
- Select symbols to display.
  - If you know the specific symbols, enter them directly.
  - If you don't know the specific symbols, use the **Search** or **Symbol Tree** to find them
- If desired, set **currency or unit of measure conversions** for symbols.
- Identify the **data fields** you wish to display using the field selector.
- Identify the **Time Series** of data you want displayed (Tick, Intraday, Daily, Weekly, Monthly, Quarterly, Yearly, Seasonal)



- Select a **data filling** option



- Optionally chose **Preferences** for the query to edit display settings such as gridlines, colors, and fonts.
- Pages are automatically saved after each click.

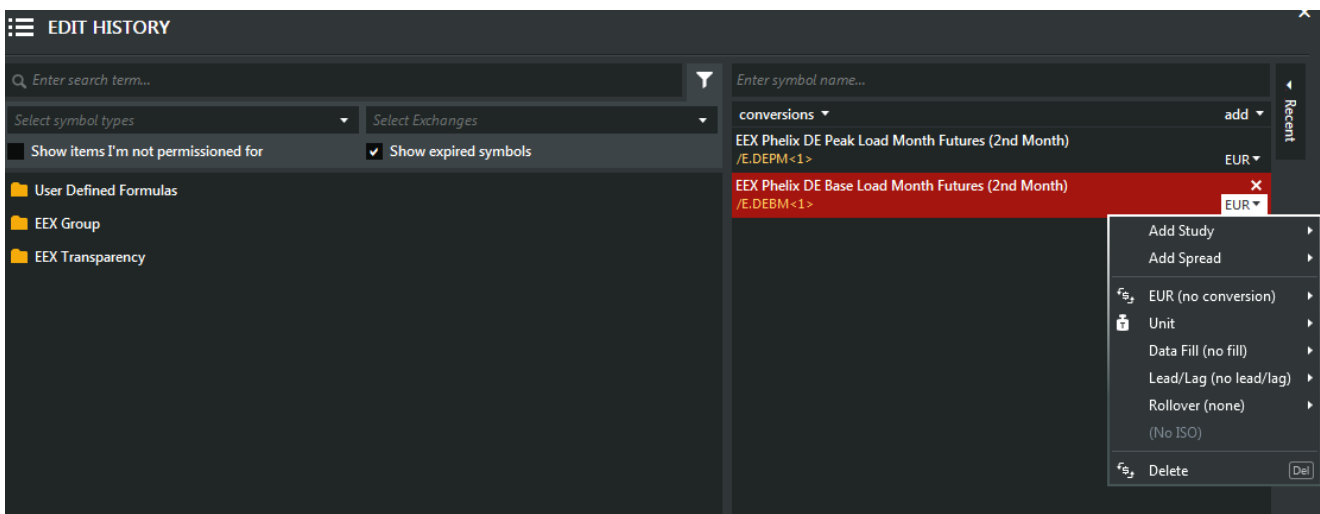
### Configurable Columns in History Panel

Columns widths can now be manipulated in horizontal view of the *History Panel*.

Daily	range: all	layout:	show statistics
	2/2...	2/2...	2/2...
lose	56.30	57.26	56.96
lume	354...	513...	546...
lose	65.87	67.12	67.07
lume	114...	165...	237...

## 4.2 Currency / Unit Conversion

Unit and currency conversions are available in the History dialog. However, they are not supported for intraday history. Unit and currency conversions are available on a per-symbol basis. Change the unit or currency by clicking on the down-arrow that appears in the selected symbols area of the History dialog box:



Any symbol whose **unit of measure** or **currency** has been changed to one other than its default will show the new unit of measure and currency in its description on the spreadsheet-

## Currency Conversion

Currency conversions may only be applied to symbols that have a currency designation stored on the price server. For symbols that do not have a currency designation, the currency unit of measure will not display.

The drop-down list allows you to select the target currency to be used in converting price values for the selected symbol. The default value in the list reflects the original currency assigned to the selected symbol.

The currency conversion checks the conversion rate between the two currencies for the date of the historical record and the exchange selected.

## Unit Conversion

Unit conversions may be applied to symbols that have a base unit of measurement stored on the price server. For symbols that do not have a base unit of measurement, the unit of measure will not display.

The drop-down list allows you to select the target unit of measure to be used in the historical display for the symbol. The default value in the list reflects the original unit of measure assigned to the symbol.

The factor being used in the unit conversion will fill in with a default value supplied by the exchange in which the symbol came from but you can manually override that value just by typing in the factor box.

## Lead/Lag

To shift the date the data is displayed on for a symbol enter a positive or negative number in the SHIFT box. Then, select whether you would like to shift the data by calendar, quoted, or week days.

## Rollover

To shift the expiration date of a symbol select whether you would like to shift it by a certain number of days or if you would like it to match another symbols expiration date. A second box will then appear where you can enter a number of days or select the symbols expiration date you want to match.

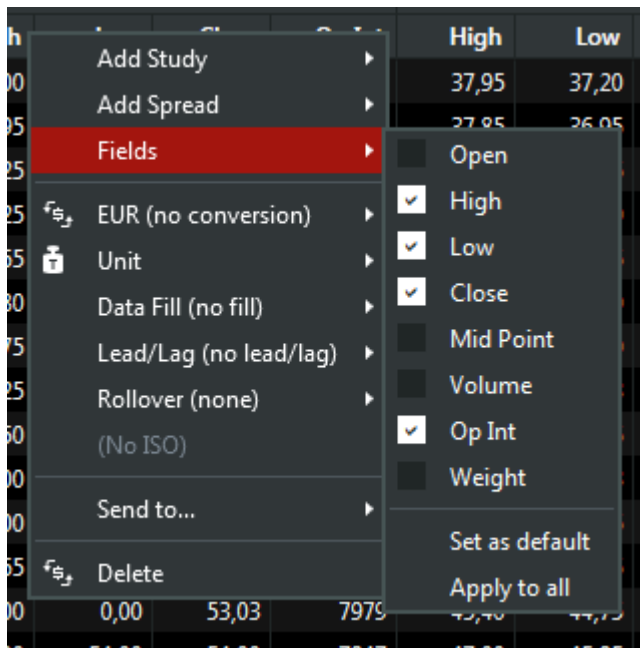
**Note: Use SELECT ALL and the conversions button at the bottom of the edit history box to apply unit and/or currency conversions to all symbols within the table.**

### 4.3 Selecting Historical Data Fields

Data fields are used to specify the data that will be placed in each column. The process for selecting fields and their definitions are listed below.

Process for selecting fields:

1. Create a **Historical Data** Table.
2. Right click on the top row which contains the default fields (close).
3. The Historical field dialog box will then pop up.



4. As you click on each field it will be add to your table or vise versa click on a field to remove it from the table.
5. Apply to all will make the fields for each symbol uniform.
6. Set as default will use this field selection for new tables created going forward.

## 4.4 Filling Missing Data

The data filling setting determines what data (if any) should be inserted in the table when there is no reported data from the exchange for a specific date. Missing data typically occurs when a holiday falls mid-week.

1. Create a **historical table**.
2. Place a check mark in the data filling box to open more options.
3. Select how you would like the data to be filled in.
4. Set the frequency in which you would like the data filled.

### Data Filling Options

- Fill Forward – Cells with missing data will be populated with the previous session's closing values. (default)
- Fill Backward – Cells with missing data will be populated with the next session's opening values.
- Interpolate – This option will fill any missing data in a data series by calculating the average using the previous and next values in the series. This option will not fill blanks at the beginning or end of the data series.
- Leave Blank – Cells will be left blank when no data is present for the time series. Uncheck the data filling box for this option.

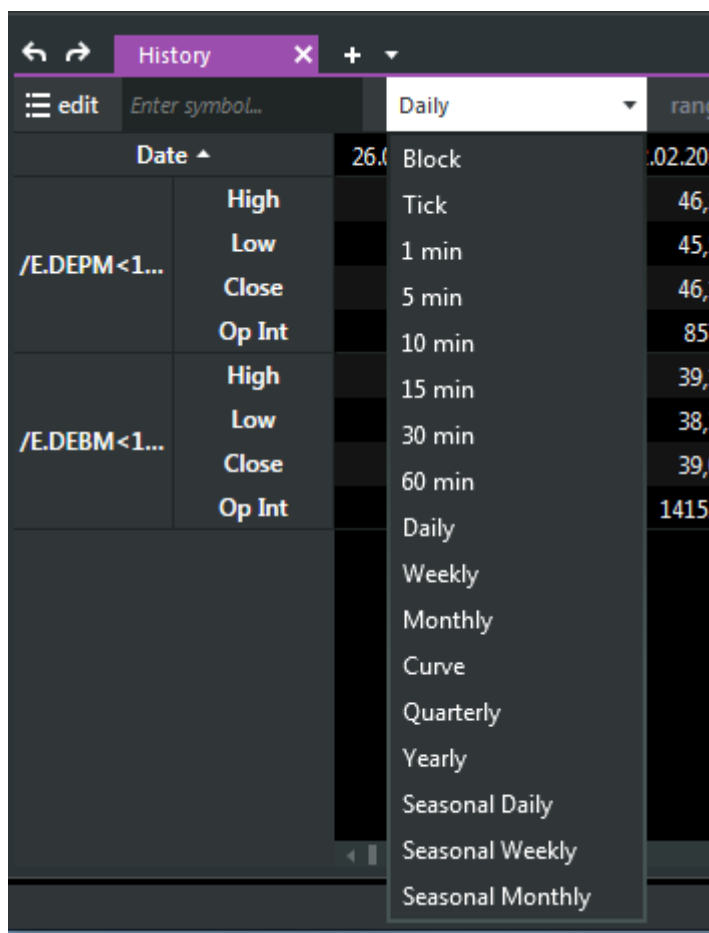
### Data Filling Frequency

- Business – Fills only dates missing data that occur between Monday – Friday.
- Six-day – Fills dates missing data that occur between Monday – Saturday.
- Daily – Fills dates missing data 7 days a week.

## 4.5 Historical Time Series

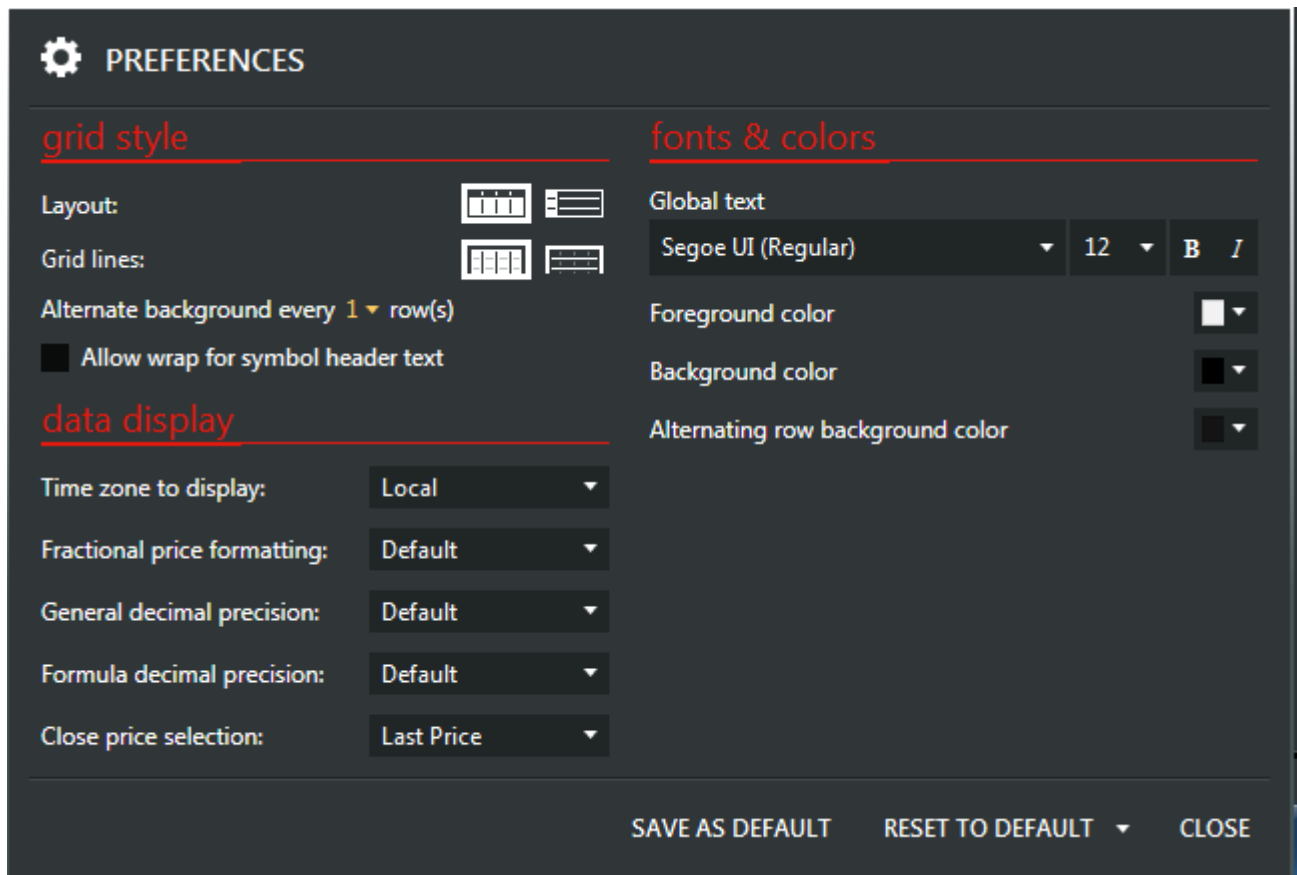
The time series drop down and date range feature can be used to display the data you need.

Simply click the down arrow and select the frequency in which you would like the data displayed. Keep in mind the symbol and exchange you are looking at. Many symbols only have one end of day prices so viewing a 1 minute table would not apply.



## 4.6 History Preferences

Use the preference settings to customize the look of your table.



Click on the cogwheel in the upper right hand corner of your window to open the preferences dialog box.

- Grid line visibility – Insert grid lines horizontally, vertically, or both ways.
- Grid color – Set a background color for the entire table.
- Text color – Change the color of the text within the table.
- Alternating row color – Secondary background color for alternating rows in the table.
- Alternate background every “X” row(s) – Select how often you want the rows to change colors.
- Grid font – Edit the style of text in your table.

## 5. Charts

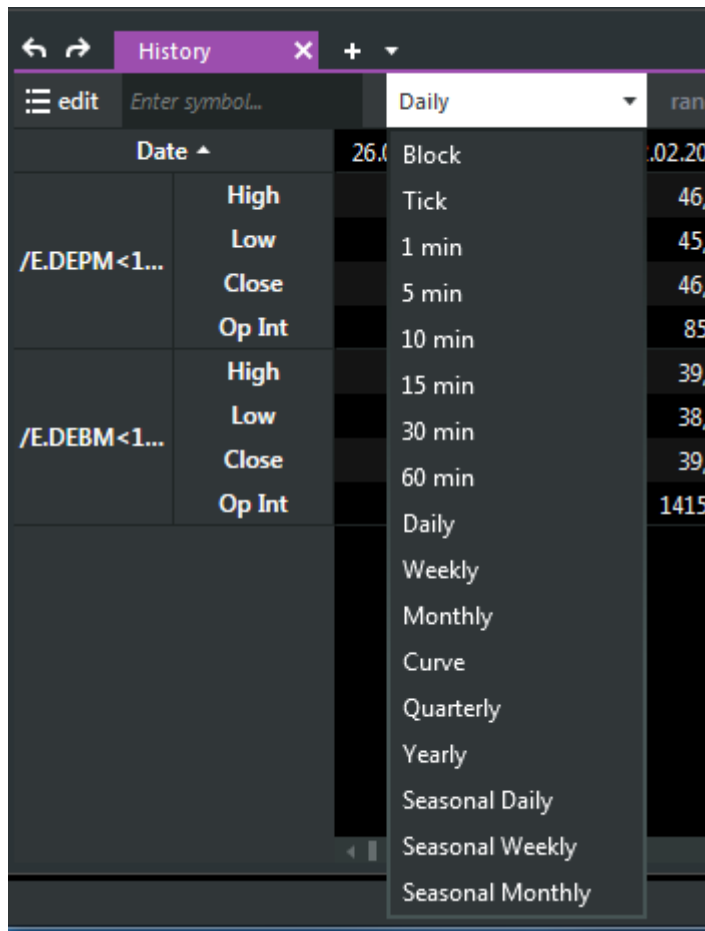
### 5.1 Chart Process

The EEX Group DataSource Chart component allows you to create a graphical chart of historical data which will automatically update. You can select from numerous time series (intraday, daily, weekly, monthly, quarterly, yearly, or seasonal) and also from numerous chart types (open, high, low close, midpoint, volume, candlestick, and bar chart).

#### IMAGE

The process of adding a Chart to your EEX Group DataSource page is listed below. Specify the desired symbols and select the data fields you want. Once the table is set, new data is automatically updated into your page.

- Initiate the query by clicking on the Chart icon.
- Select symbols to display.
  - If you know the specific symbols, enter them directly.
  - If you don't know the specific symbols, use the **Search** or **Symbol Tree** to find them
- If desired, set **currency or unit of measure conversions** for symbols.
- Identify the **Time Series** of data you want displayed (Tick, Intraday, Daily, Weekly, Monthly, Quarterly, Yearly, Seasonal)



- Add Studies
- Optionally edit the chart display settings
  - Chart Type
  - Line and background colors
  - Drawing Tools
  - Grid Lines
- Pages are automatically saved after each click.

## 5.2 Chart Type and Color

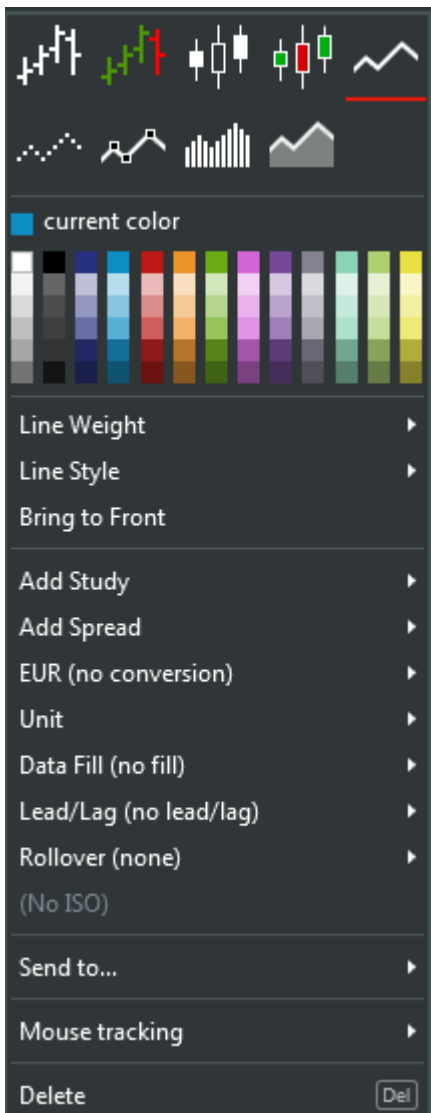
Once you have created a chart there are a number of ways to change the chart type and color. Changing the chart type allows you to view the symbol in the following forms: bar, candlestick, line, histogram, and area. There are a couple ways you can go about changing the chart type.

### 1. From the edit chart dialog box.

1. Click edit

2. Select the symbol you want change the chart type of and click on the colored square which signifies the line color.

3. The following box will pop up.

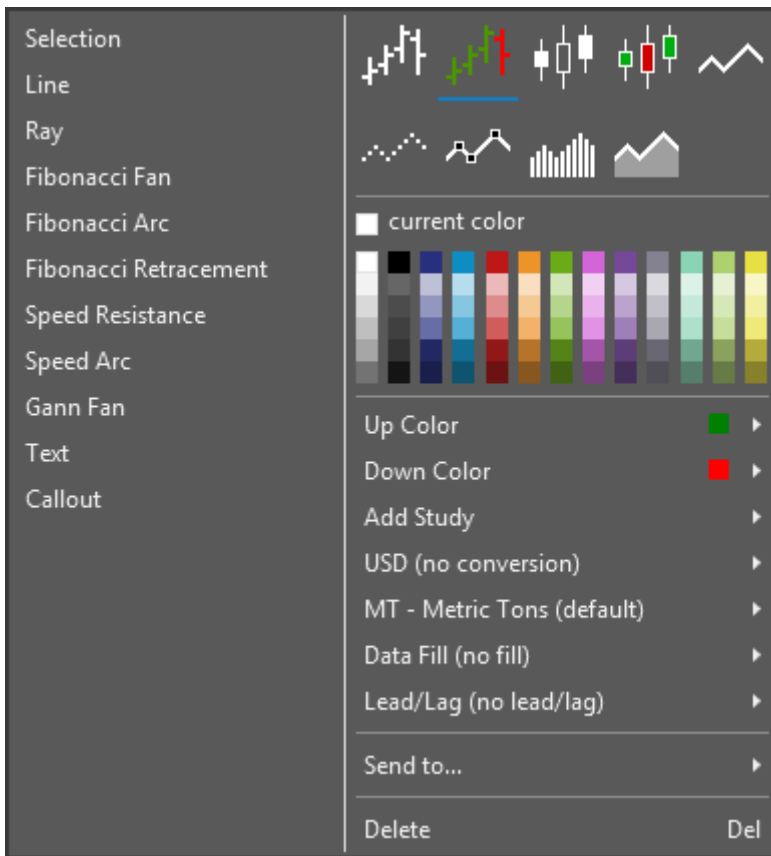


4. Use the images across the top to change the chart type or use color pallet to change the line color.

## 2. Right click on the chart.

1. Right Click on the chart

2. The following box will pop up







3. Use the images across the top to change the chart type or use color pallet to change the line color.

### 3. Select the line.

1. Click on the line.

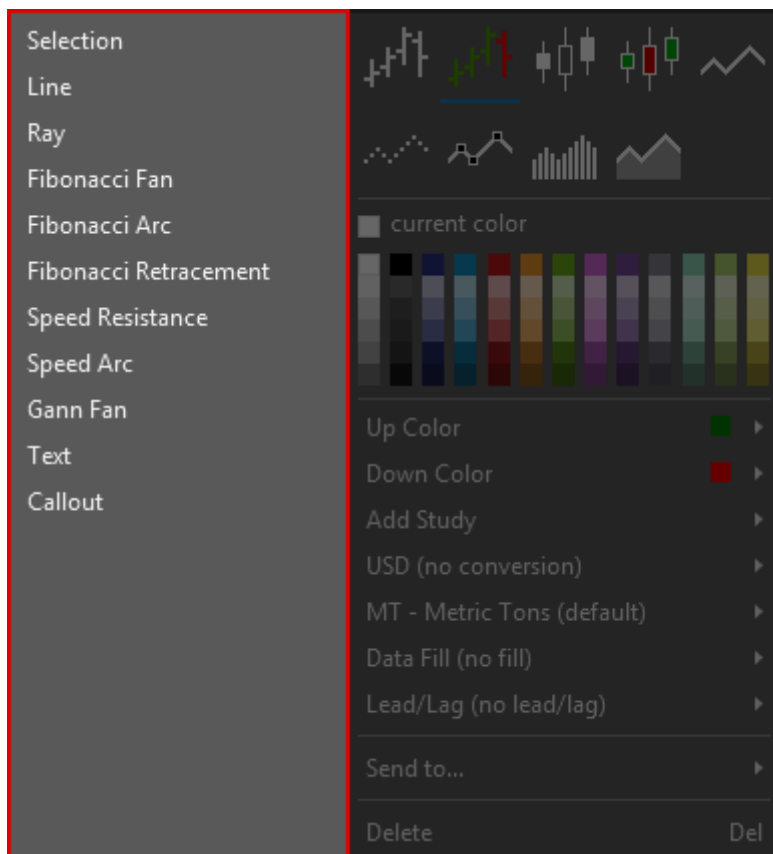
2. New buttons will appear in the toolbar across the top.



-  Deletes the selected line.
-  Brings the selected line to the front, overlaying the other lines in the chart.
-  Brings up color pallet to change the line color.
-  Change the chart type.

## 5.3 Trendlines

MarketView charts support the use of both free-form and calculated trendlines. Trendlines are applied and managed in charts via the drawing toolbar.



The drawing tool bar is located directly above the chart, next to the time series drop down.


### Drawing Toolbar

Line	
Ray	
Fibonacci Fan	Lines are displayed by drawing a trendline between two extreme points, for example, a trough and opposing peak. Then an “invisible” vertical line is drawn through the second extreme point. Three trendlines are then drawn from the first extreme point so they pass through the invisible vertical line at the Fibonacci levels of 38.2%, 50.0%, and 61.8%.
Fibonacci Arc	Is displayed by first drawing a trendline between two extreme points, for example, a trough and opposing peak. Three arcs are then drawn, centered on the second


	<p>extreme point, so they intersect the trendline at the Fibonacci levels of 38.2%, 50.0%, and 61.8%. Note that the points where the Arcs cross the price data will vary depending on the scaling of the chart. 23.6% and 78.62%</p>
Fibonacci Retracement	<p>Is a three-line indicator with 0 and 100 hundred applied as upper &amp; lower bounds. It is displayed by drawing a trend line between two extreme points, for example, a trough and opposing peak. An “invisible” vertical line is drawn through the second extreme point, then three trend lines are drawn from the first extreme point so they pass through the invisible vertical line at the Fibonacci levels of 0, 23.6, 38.2, 50.0, 61.8, 78.62, and 100 percent. The primary, 0.0%, 100% are solid lines while the others are dotted.</p>
Speed Resistance	
Speed Arc	
Gann Fan	<p>Is displayed by drawing the primary line at the equivalent of a 1×1 relationship to the scale of the chart. Two lines are then drawn “above” and “below” the line at the following intervals:</p> <ul style="list-style-type: none"> <li>• 1 x 4</li> <li>• 1 x 2</li> <li>• PRIMARY LINE – 1×1 relationship between X and Y axis</li> <li>• 2 x 1</li> <li>• 4 x 1</li> </ul> <p>When drawing a Gann Fan, the user is prompted with a dialog to set options for drawing of the Gann Fan:</p> <ol style="list-style-type: none"> <li>1. The user is first prompted to select the Y-axis increment to be used in the 1×1 relationship. This value will be editable (free form) and labeled as “Points per bar” <ul style="list-style-type: none"> <li>o X-axis increments will be determined using the period selection of the chart (e.g. daily, weekly, etc.).</li> </ul> </li> <li>2. The user will be prompted to choose which direction the lines will be drawn. <ul style="list-style-type: none"> <li>o It is assumed that the line to be drawn from left to right across the chart.</li> </ul> </li> <li>3. The user will have the option to select drawing the lines up or down. <ul style="list-style-type: none"> <li>o This option will be presented with two checkboxes labeled “Down Right” and “Up Right”.</li> </ul> </li> </ol>

The user can invoke the dialog again to change these settings via a right-mouse click menu. The drawing of the Primary Line is dictated by the application using the 1×1 relationship defined by the user. The user is only able to change the line by adjusting the 1×1 settings.

## Editing Trendlines

Edit trendlines by selecting the mouse cursor  from the drawing toolbar. Then select the desired trendline using a single left mouse click on any of the visible handles or square boxes on each end of the primary line. The trendline's size and position is then adjusted by using the left mouse button and "dragging" the primary line's end point to a new location. The trendline redraws to reflect the new coordinates of the primary line.

## Moving Trendlines

Move a trendline by selecting the mouse cursor  from the drawing toolbar. Then click and drag the desired trendline into its new position.

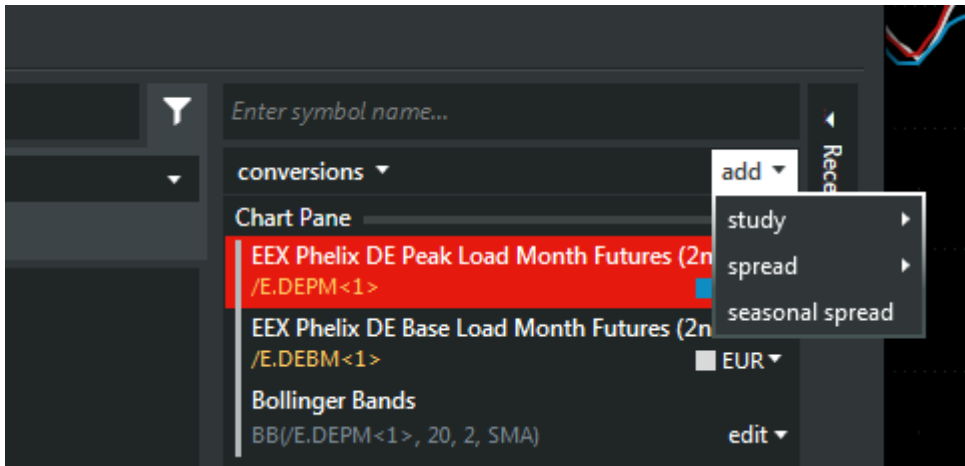
## 5.4 Studies

### Adding a study

There are 2 ways to add a study to a symbol within your chart.

#### From the edit chart dialog box

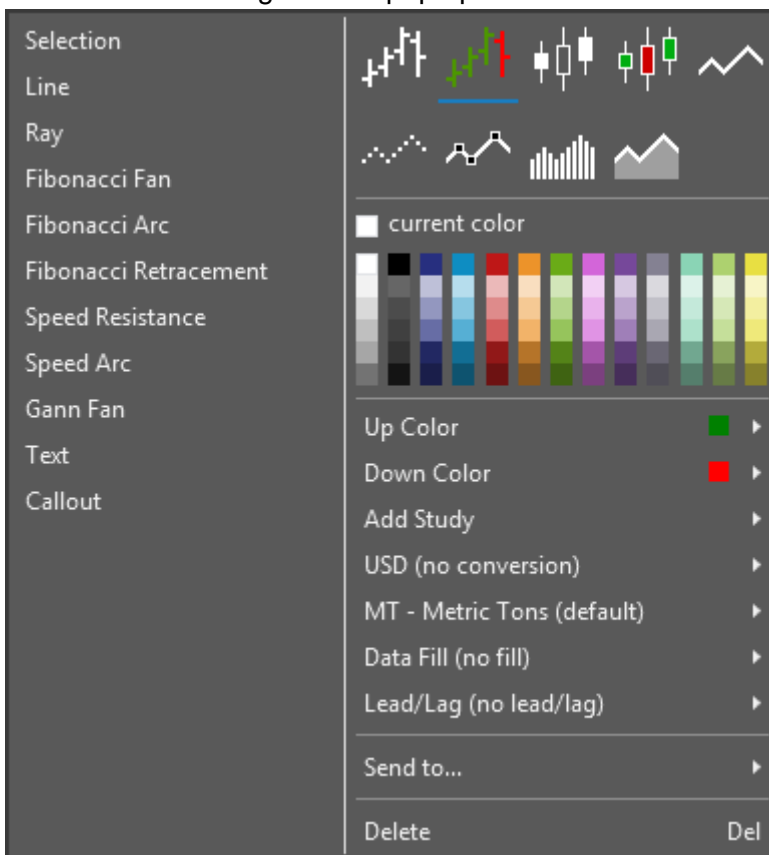
1. Click edit
2. Select the symbol you want to add a study to. The **Add Study** button will no longer be greyed out.



Click **Add Study** button and select a study from the list.

### Right click on the chart

1. Create a chart
2. Right click on the line within the chart you wish to add the study to.
3. The following box will pop up.

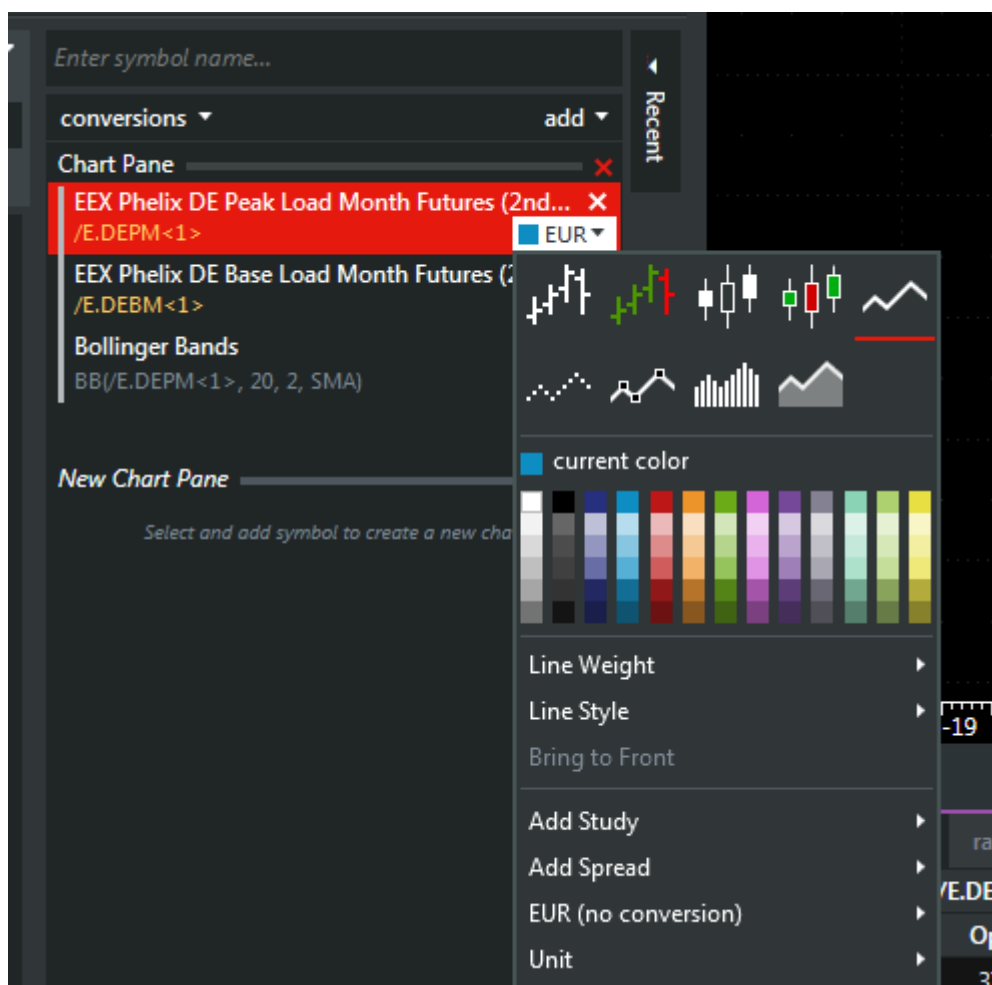


4. Hover your mouse over Add Study
5. Select a study from the list.

## Editing a Study

Once a study has been applied to a chart you can edit it from the edit chart dialog box.

1. Click edit
2. Select the study you want to edit.
3. Click on the options drop down next to that stud. Based on the study you have selected the appropriate parameters will appear below.y



## 5.5 Charts Data Display

Once you have created a chart you will want to know how to read it and edit some of the characteristics. This section will point out

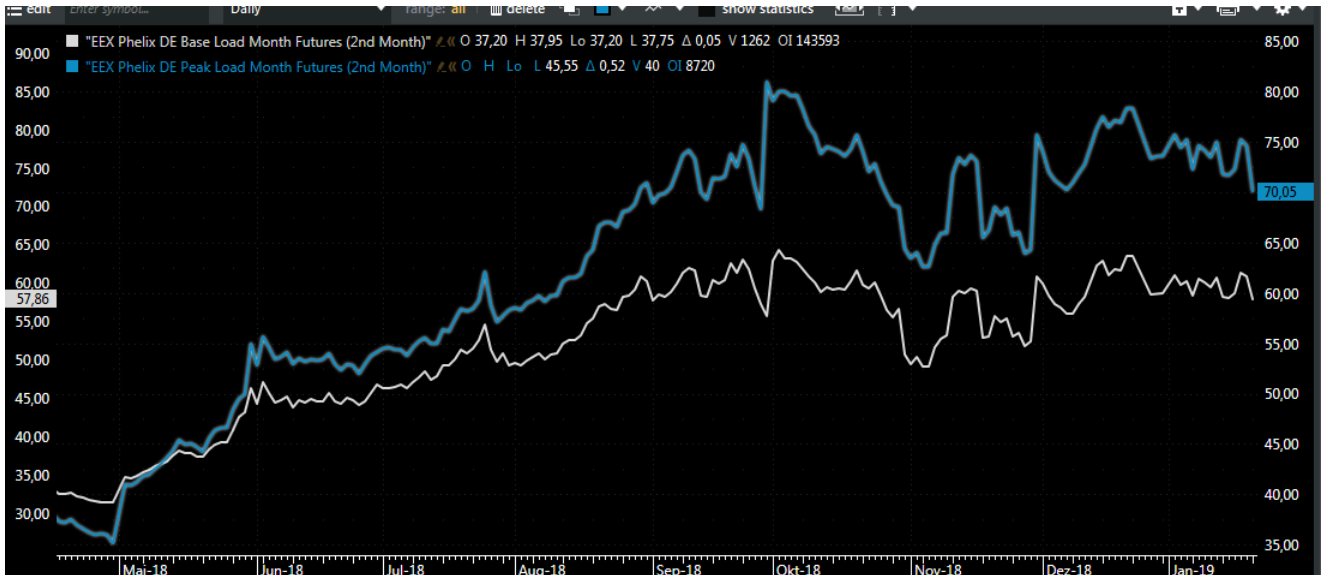


1. Edit	Use this button to access the edit chart dialog box. From here you can access the symbol tree, add/remove symbols, add studies and change line color.
2. Enter Symbol	Use this box to add a symbol to the chart. You must know the symbol name, if you dont use the edit button to search for a symbol.
3. Time Series	Use the drop down to select the frequency in which you want to see the data (daily, weekly, monthly, etc...)
4. Delete	Select a line or study and click delete to remove it.
5. Bring to Front	Select a line or study and click Bring to Front to place it over the top of the other lines.
6. Color	Select a line or study then use the drop down to select a color.

7. Line type	Select a line then use this drop down to select a chart type (bar, candlestick, dot, etc..)
8. Date Range	Use this feature to set a specific start and end date.
9. Show Statistics	This feature will display the min, max, mean, and standard deviation at the top of your chart.
10. Settings	Use the settings icon to change the fonts and colors within your chart.
11. X-Axis	Plots the date of the data.
12. Y-Axis	Plots the value of the data

## 5.6 Axis Settings

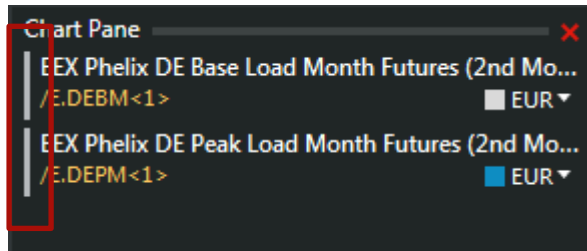
In your EEX Group DataSource Chart you can change the Y axis the line is plotted on to better compare the tickers. You may want to set both tickers to the right axis so you can accurately see the difference in prices. Another option is to set one ticker to the right access and the other ticker to the left access; this is best used to compare instruments with very different prices or units.



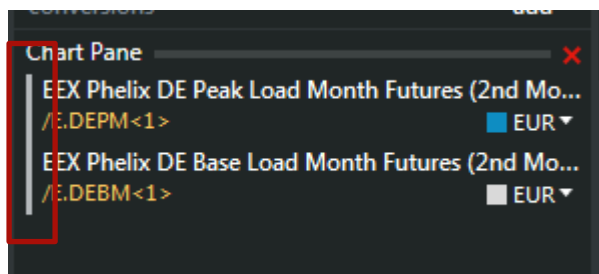
To change the Y axis the line is plotted on:

- Click on the Edit button to open the edit chart dialog box.
- Drag the vertical bar next to the symbol up or down to attach or unattach it from another symbol.

If there is a gap in the bars they will be charted on different axis's.



If there is no gap and the bars are connected they will be charted on the same axis.



- Desktop also has the ability to display more than 2 separate axis, they will just be stacked next to each other like in the image below.

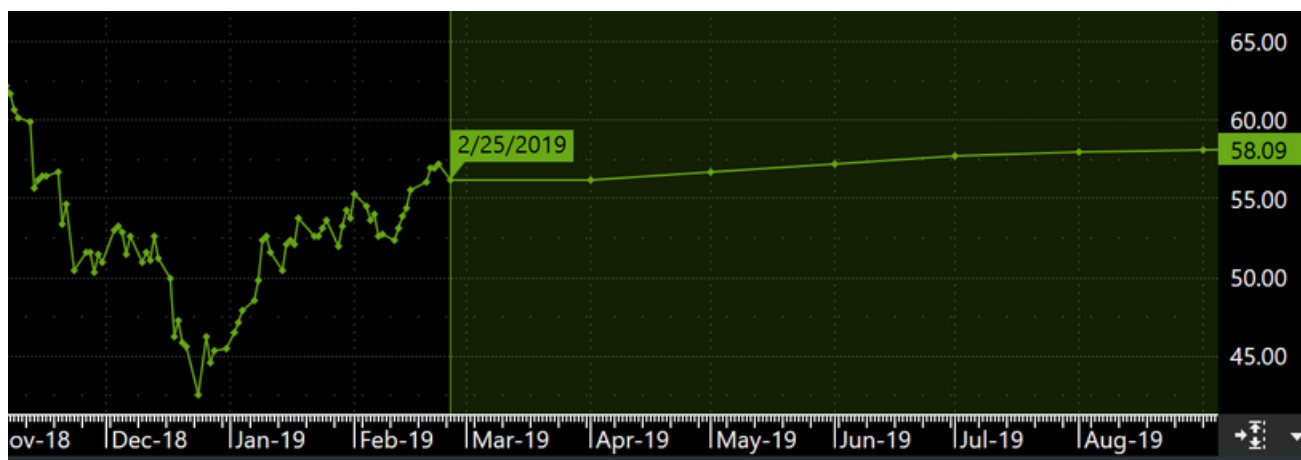


Chart can now be quickly reset to default zoom and position.



## 5.7 Continuation Charts

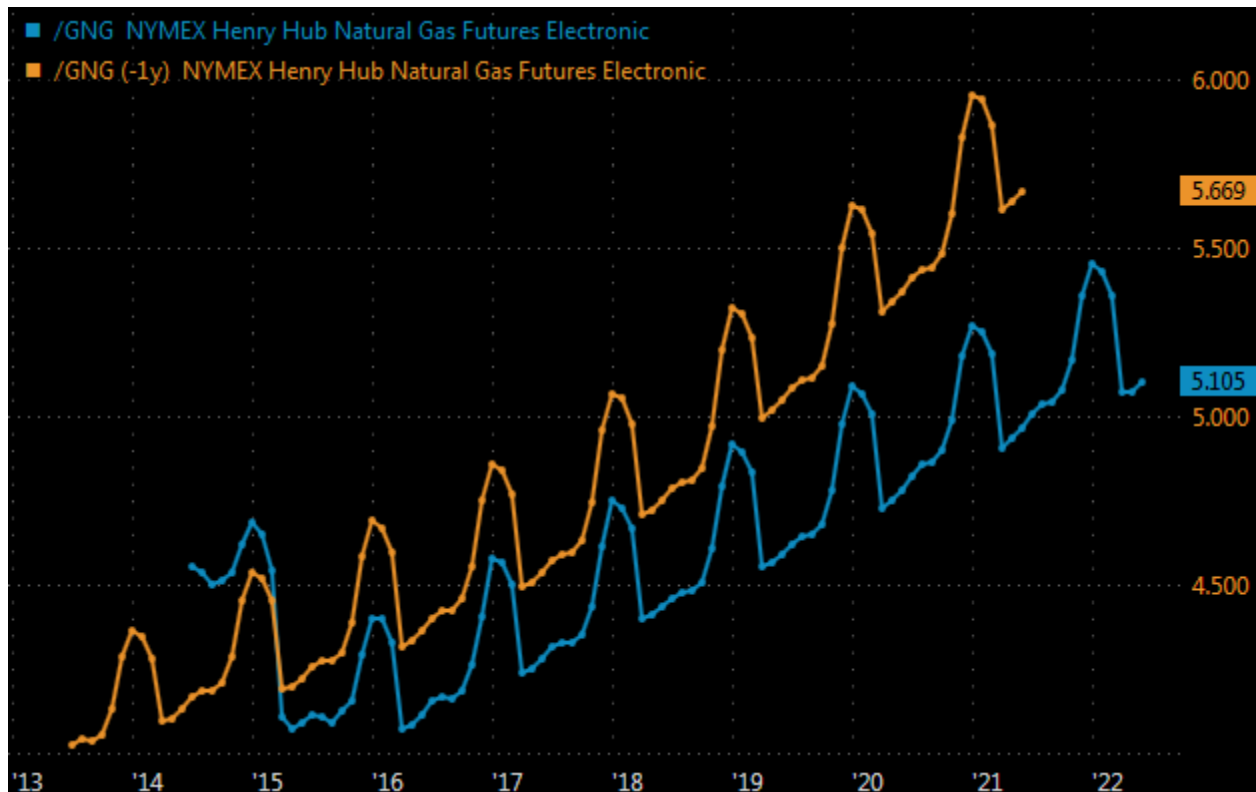
New mode in *Chart* allows display of a Daily plot that is continued with a Forward Curve at a specified date.



## 6. Curve

### 6.1 Curve Process

The EEX Group DataSource Curve component allows you to chart all the future contracts for a single commodity. View the current prices from today or compare today's curve vs a historical forward curve.



To create a forward curve follow the process below:

- Initiate a forward curve by clicking on **curve** found in the Desktop toolbar.
- Select the instrument to display.

If you know the root symbol, enter it directly.

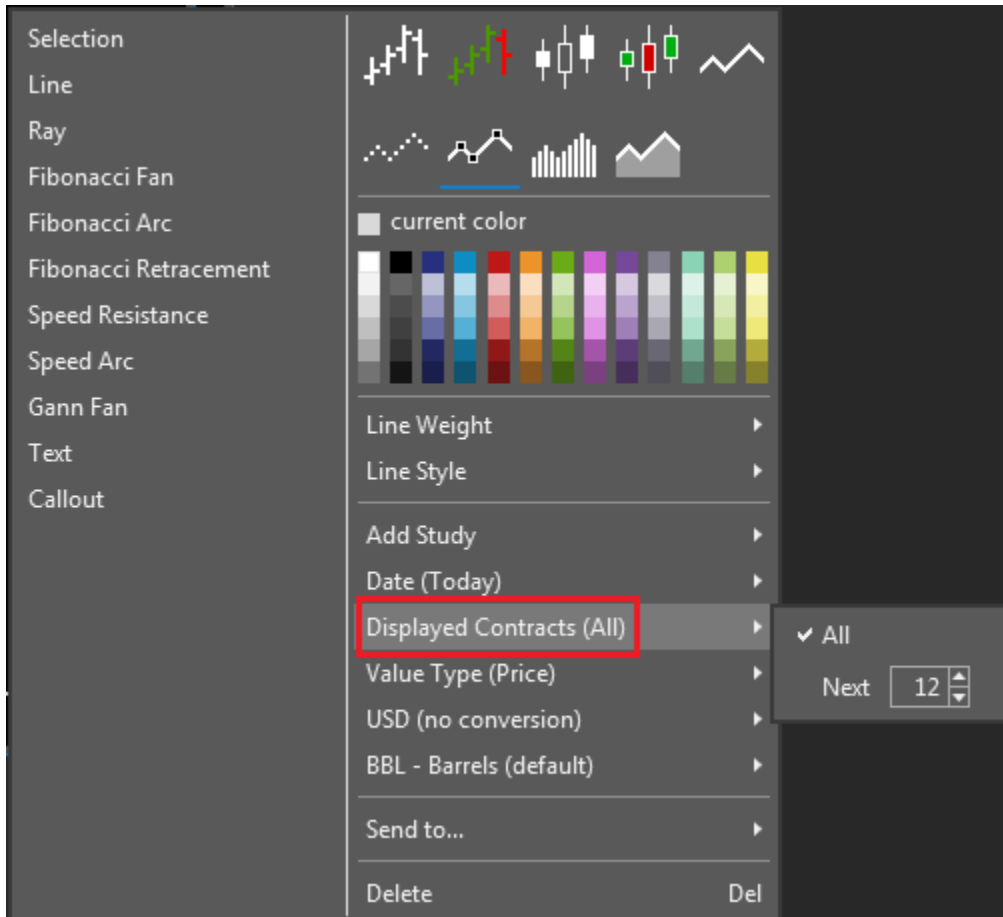
If you don't know the root of the symbol, click edit to find it in the symbol tree.

- Set display preferences.
- Change the date.

Either right click on the chart or select the edit button and use the drop down to find the date parameter.

Select an exact date using the calendar or chose Days, Weeks, Months, or Years back.

- View all future contracts by default or right click and select Displayed Contracts to set a specific amount of contracts to view



## 6.2 Curve Display Preferences

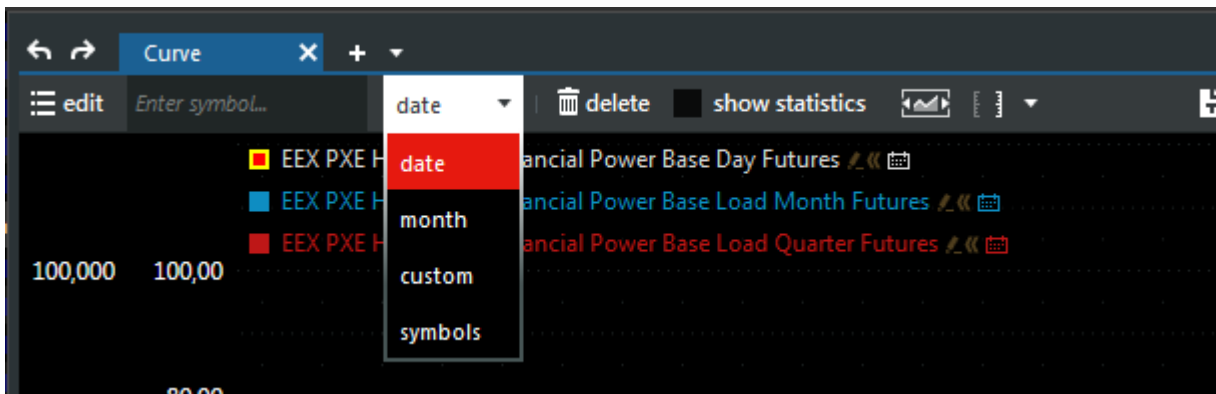
Customize the display of your forward curve by changing colors, labels, and data info displayed.

### X AXIS

One unique feature to forward curves is the ability to change the X axis display. By default the curve will display dates (years) on the X axis. You also have the ability to view months or the number of contracts out from front month.

#### To do this:

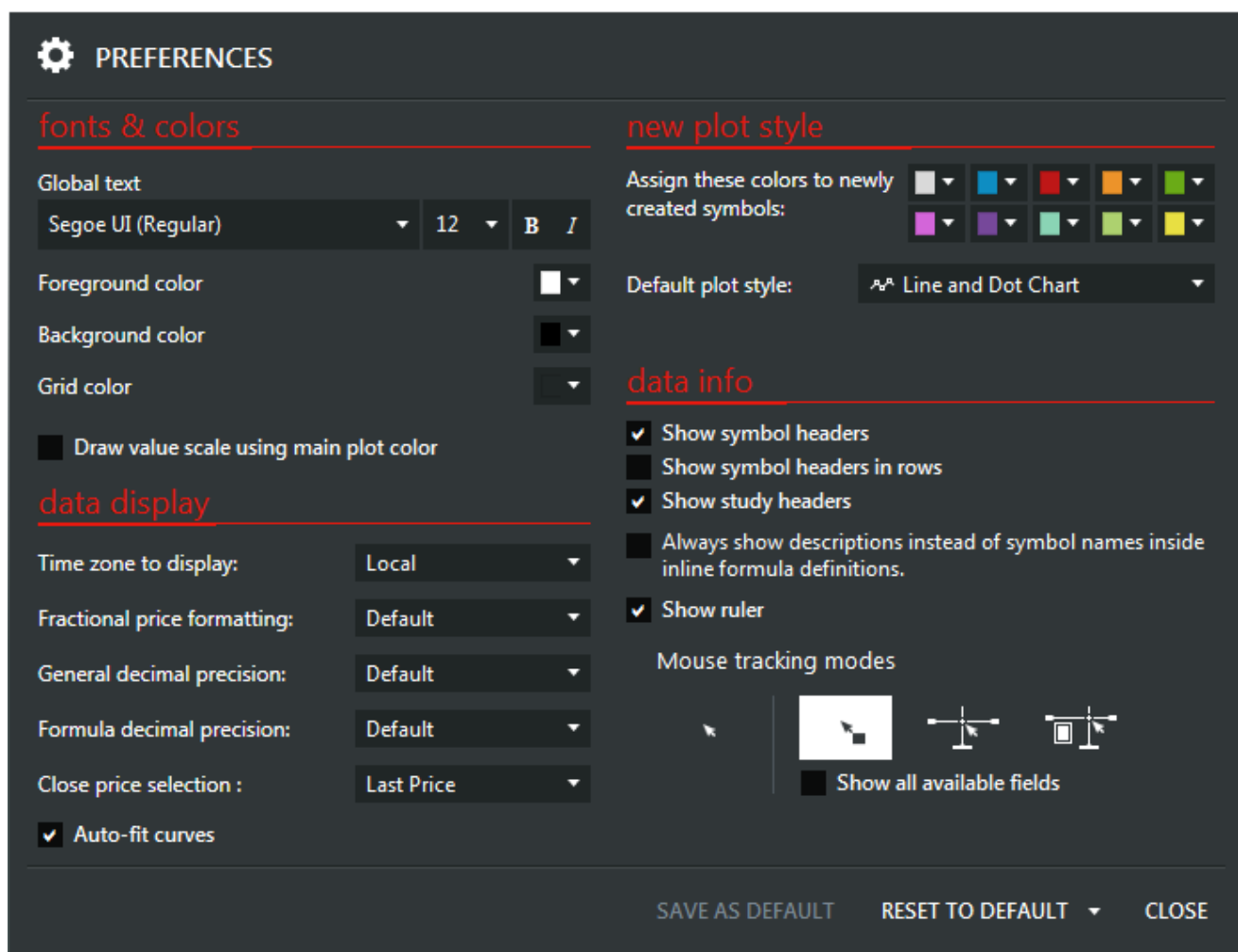
Select the date drop down and chose months or date.



## Preferences

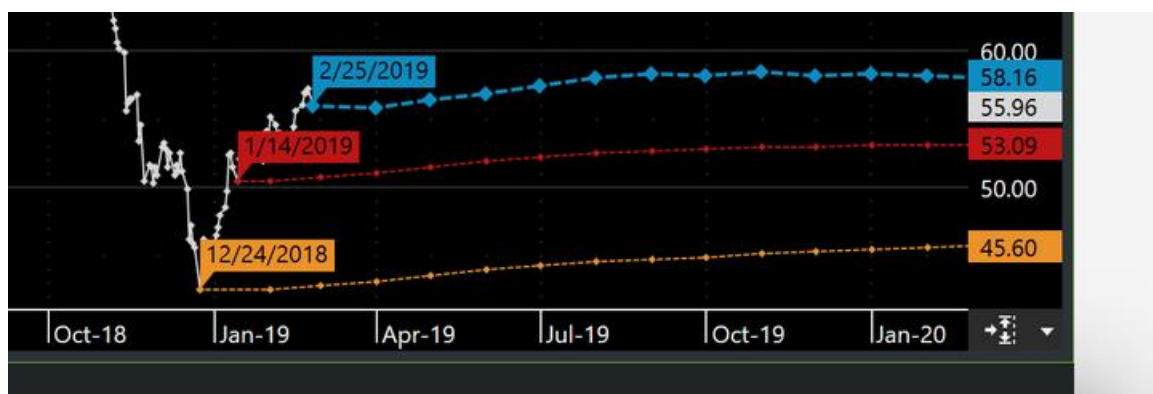
In the preferences box you have the ability to edit fonts, colors, and the data info displayed.

Access the preferences settings by clicking on 



### 6.3 Linked Forward Curves

Forward Curves can now be linked to a plot for the Root Symbol at a specified date.

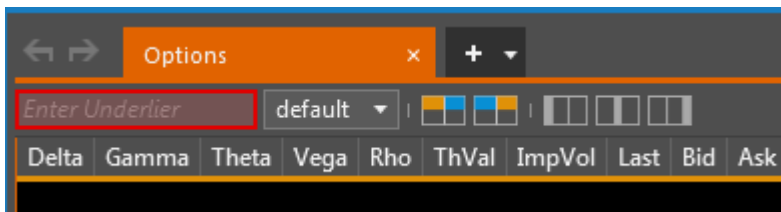


## 7. Options

### 7.1 Option Process

The EEX Group DataSource Options component allows you to view live streaming call and put prices from futures options contracts. Setup the table to display one contract or multiple. Customize the fields and number of strike prices all to suit your needs.

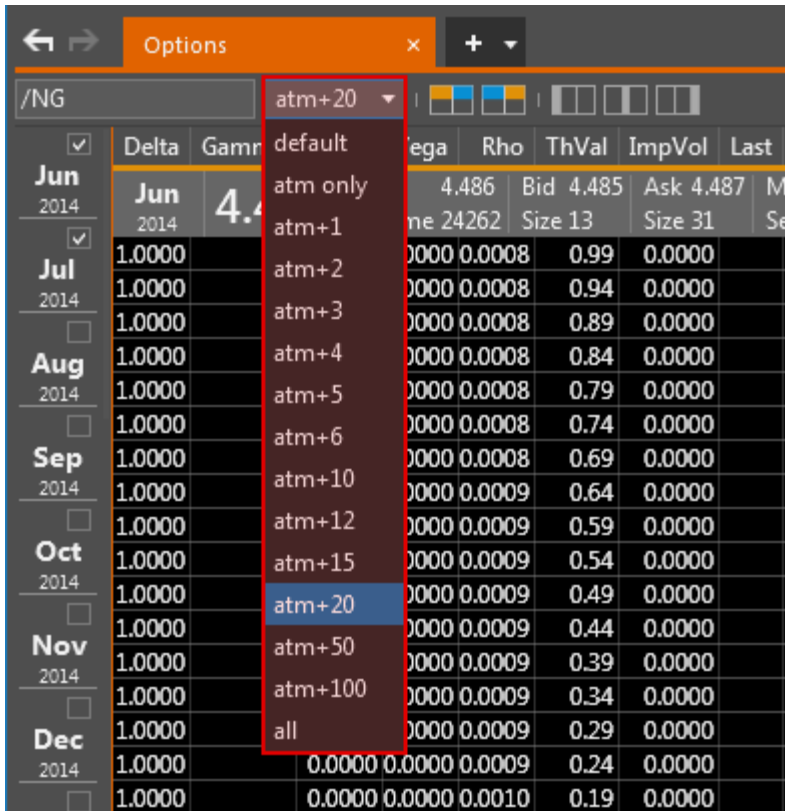
1. Initiate an options query by clicking on the Options icon.
2. Enter the **root** of a symbol in the upper left hand corner.



3. Select the futures contracts you would like displayed by checking the appropriate boxes in the left hand column.

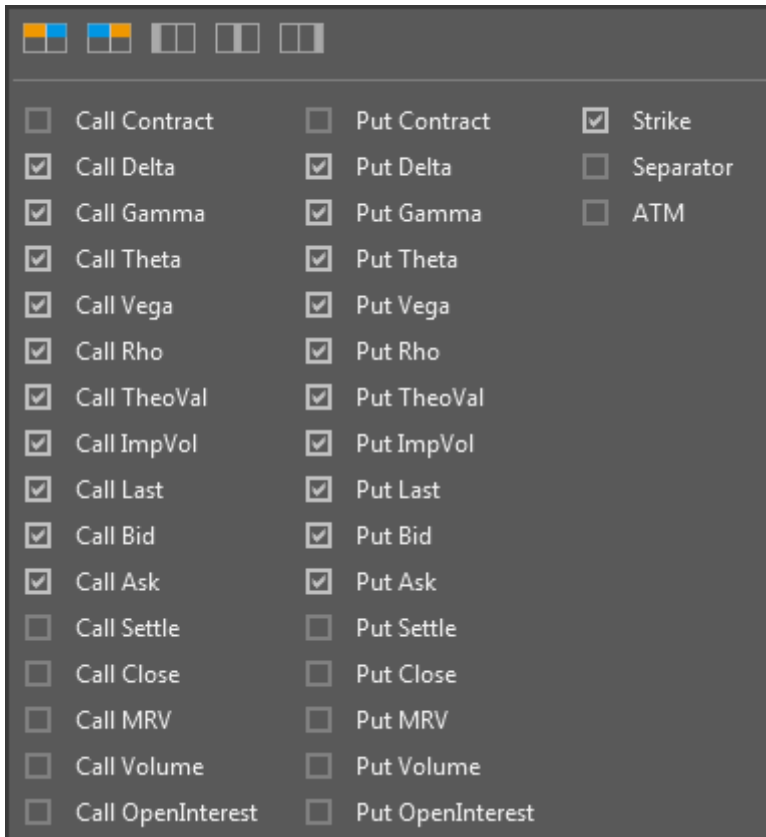
Options									
/NG atm+20									
	Delta	Gamma	Theta	Vega	Rho	ThVal	ImpVol	Last	
<input checked="" type="checkbox"/> Jun 2014	Jun 2014	4.484	Last 4.484	Bid 4.484	Ask 4.485	M			
<input checked="" type="checkbox"/> Jul 2014	1.0000		0.0000	0.0000	0.0008	0.98	0.0000		
<input type="checkbox"/> Aug 2014	1.0000		0.0000	0.0000	0.0008	0.93	0.0000		
<input type="checkbox"/> Sep 2014	1.0000		0.0000	0.0000	0.0008	0.88	0.0000		
<input type="checkbox"/> Oct 2014	1.0000		0.0000	0.0000	0.0008	0.83	0.0000		
<input type="checkbox"/> Nov 2014	1.0000		0.0000	0.0000	0.0008	0.78	0.0000		
<input type="checkbox"/> Dec 2014	1.0000		0.0000	0.0000	0.0008	0.73	0.0000		
<input type="checkbox"/> Jan 2015	1.0000		0.0000	0.0000	0.0009	0.68	0.0000		
<input type="checkbox"/> Feb 2015	1.0000		0.0000	0.0000	0.0009	0.63	0.0000		
<input type="checkbox"/> Mar 2015	1.0000		0.0000	0.0000	0.0009	0.58	0.0000		
<input type="checkbox"/> Apr 2015	1.0000		0.0000	0.0000	0.0009	0.53	0.0000		
<input type="checkbox"/> May 2015	1.0000		0.0000	0.0000	0.0009	0.48	0.0000		
<input type="checkbox"/> Jun 2015	1.0000		0.0000	0.0000	0.0009	0.43	0.0000		
<input type="checkbox"/> Jul 2015	1.0000		0.0000	0.0000	0.0009	0.38	0.0000		
<input type="checkbox"/> Aug 2015	1.0000		0.0000	0.0000	0.0009	0.33	0.0000		
<input type="checkbox"/> Sep 2015	1.0000		0.0000	0.0000	0.0009	0.28	0.0000		
<input type="checkbox"/> Oct 2015	1.0000		0.0000	0.0000	0.0009	0.23	0.0000		
<input type="checkbox"/> Nov 2015	1.0000		0.0000	0.0000	0.0010	0.18	0.0000		
<input type="checkbox"/> Dec 2015	1.0000		0.0000	0.0000	0.0010	0.13	0.0000		
<input type="checkbox"/> Jan 2016	0.6815	1.8980	-0.0041	0.0024	0.0007	0.12	0.2813	0.13	
<input type="checkbox"/> Feb 2016	0.6370	3.7294	-0.0023	0.0025	0.0006	0.06	0.1505		
<input type="checkbox"/> Mar 2016	0.4745	2.1173	-0.0046	0.0027	0.0005	0.07	0.2813	0.07	
<input type="checkbox"/> Apr 2016	0.3717	2.0108	-0.0044	0.0025	0.0004	0.05	0.2813	0.05	
<input type="checkbox"/> May 2016	0.2782	1.7847	-0.0039	0.0022	0.0003	0.03	0.2813	0.03	
<input type="checkbox"/> Jun 2016	0.2150	1.4548	-0.0036	0.0020	0.0002	0.02	0.3005	0.03	
<input type="checkbox"/> Jul 2016	0.1186	1.1300	-0.0021	0.0013	0.0001	0.01	0.2626	0.01	
<input type="checkbox"/> Aug 2016	0.1031	0.8934	-0.0022	0.0012	0.0001	0.01	0.3005	0.01	
<input type="checkbox"/> Sep 2016	0.0671	0.6469	-0.0016	0.0009	0.0001	0.01	0.3005	0.01	
<input type="checkbox"/> Oct 2016	0.0419	0.4454	-0.0011	0.0006	0.0000	0.00	0.3005		
<input type="checkbox"/> Nov 2016	0.0251	0.2920	-0.0007	0.0004	0.0000	0.00	0.3005	0.01	
<input type="checkbox"/> Dec 2016	0.0145	0.1826	-0.0005	0.0002	0.0000	0.00	0.3005	0.00	
<input type="checkbox"/> Jan 2017	0.0080	0.1091	-0.0003	0.0001	0.0000	0.00	0.3005		
<input type="checkbox"/> Feb 2017	0.0043	0.0623	-0.0002	0.0001	0.0000	0.00	0.3005		
<input type="checkbox"/> Mar 2017	0.0022	0.0341	-0.0001	0.0000	0.0000	0.00	0.3005		
<input type="checkbox"/> Apr 2017	0.0011	0.0179	0.0000	0.0000	0.0000	0.00	0.3005		
<input type="checkbox"/> May 2017	0.0005	0.0090	0.0000	0.0000	0.0000	0.00	0.3005		
<input type="checkbox"/> Jun 2017	0.0002	0.0044	0.0000	0.0000	0.0000	0.00	0.3005	0.00	
<input type="checkbox"/> Jul 2017	0.0001	0.0020	0.0000	0.0000	0.0000	0.00	0.3005	0.00	
<input type="checkbox"/> Aug 2017	0.0000	0.0009	0.0000	0.0000	0.0000	0.00	0.3005		
<input type="checkbox"/> Sep 2017	0.0000	0.0004	0.0000	0.0000	0.0000	0.00	0.3005		
<input type="checkbox"/> Oct 2017	0.0000	0.0002	0.0000	0.0000	0.0000	0.00	0.3005		
<input type="checkbox"/> Nov 2017	0.0000	0.0001	0.0000	0.0000	0.0000	0.00	0.3005		
<input type="checkbox"/> Dec 2017	Jul 2014	4.487	Last 4.487	Bid 4.487	Ask 4.489	M			
<input type="checkbox"/> Jan 2018	Volume 13323	Size 3	Size 13	Size 13	Size 13	Size 13	Size 13	Size 13	Size 13

4. Chose how many strike prices you would like to see on either side of ATM price (At The Money).  
By default the option query displays 6 strike prices above and below the ATM price



Options		atm+20						
NG	Delta	Gamr	default	Mega	Rho	ThVal	ImpVol	Last
Jun 2014	Jun 2014	4.4	atm only	4.486	Bid 4.485	Ask 4.487	M	
			atm+1	ne 24262	Size 13	Size 31	Se	
Jul 2014	1.0000		atm+2	0.0000	0.0008	0.99	0.0000	
	1.0000		atm+3	0.0000	0.0008	0.94	0.0000	
Aug 2014	1.0000		atm+4	0.0000	0.0008	0.89	0.0000	
	1.0000		atm+5	0.0000	0.0008	0.84	0.0000	
Sep 2014	1.0000		atm+6	0.0000	0.0008	0.79	0.0000	
	1.0000		atm+10	0.0000	0.0008	0.74	0.0000	
Oct 2014	1.0000		atm+12	0.0000	0.0009	0.69	0.0000	
	1.0000		atm+15	0.0000	0.0009	0.64	0.0000	
Nov 2014	1.0000		atm+20	0.0000	0.0009	0.59	0.0000	
	1.0000		atm+50	0.0000	0.0009	0.54	0.0000	
Dec 2014	1.0000		atm+100	0.0000	0.0009	0.49	0.0000	
	1.0000		all	0.0000	0.0009	0.44	0.0000	
	1.0000			0.0000	0.0009	0.39	0.0000	
	1.0000			0.0000	0.0010	0.34	0.0000	
	1.0000			0.0000	0.0010	0.29	0.0000	

5. Edit the fields displayed by right clicking on any field. Check the box next to each field name you would like displayed.



6. Pages are automatically saved after each click.


## 7.2 Option Parameters

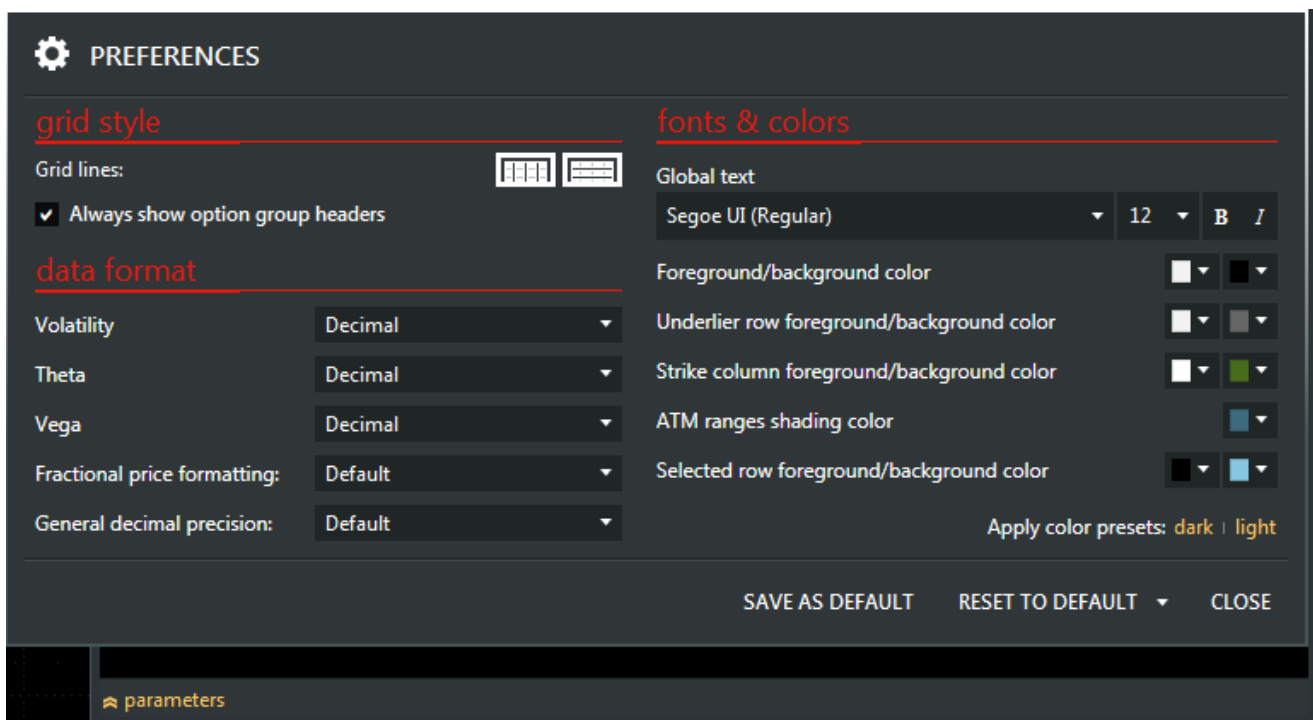
Option parameters allow you to change the options model, volatility, and underlier among man.

- Change the model used to calculate prices.
  1. Black, Black Scholes, Binomial, and Whaley
- Edit the underlyer being used.
  1. Last, Bid, Ask, Mid, Settle, Close, Most Recent Value
- Use implied volatility or enter your own custom value
- Use the default interest rate or enter your own custom value
- Use the default number of days or enter your own custom value

## 7.3 Option Display Preferences

Change the layout of your options grid or edit the colors to make the window easier to read.

1. All display preferences are found in the cogwheel  in the top right of the window



2. Also change the layout of grid using the icons in the toolbar. Chose which side you want put and call prices displayed on and even move the strike price column to a desired location.



## 8. Scrolling News

### 8.1 Scrolling News Process


All Events in the EEX Transparency Data section such as non-usabilities and Adhoc messages can be displayed through NEWS.

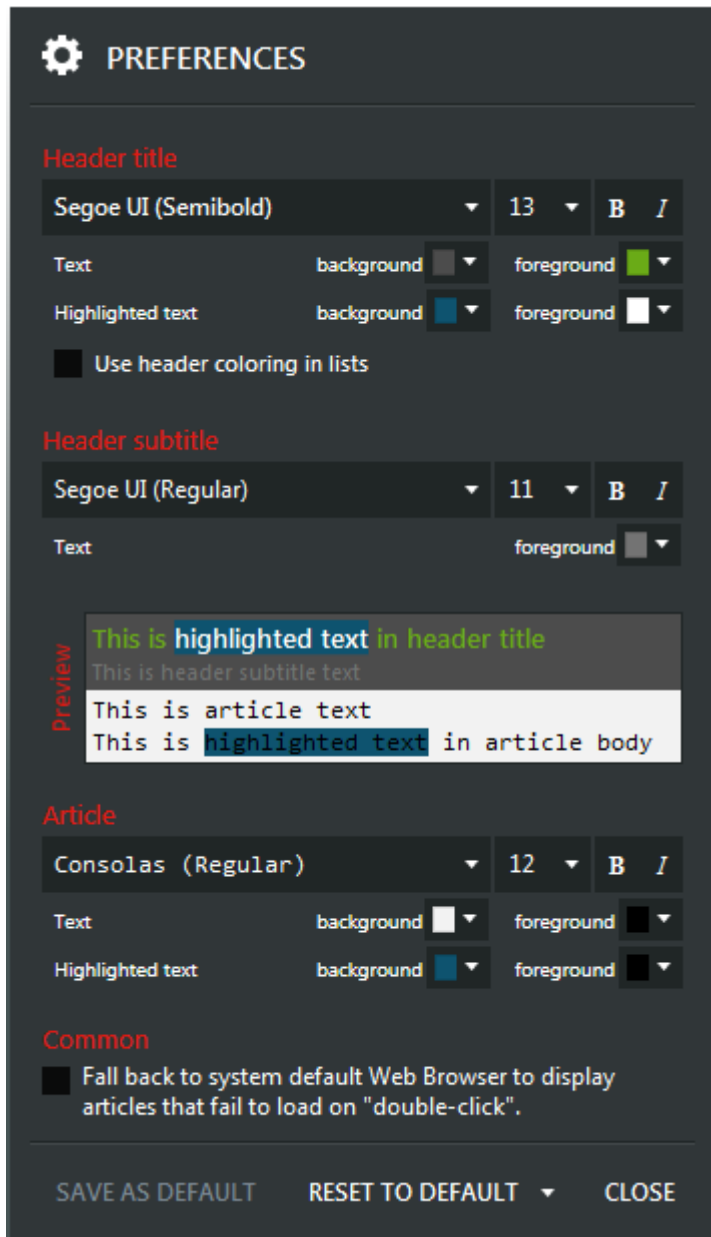
- Initiate a news window by clicking on the news icon.
- By default all news sources will show up in the feed. To select the sources you want in your feed click edit.
- Select the news sources you would like displayed in your feed.
  1. Check the box next to the source for it to appear in your feed
  2. Set each source as a different color so it is easy to distinguish them apart in your feed. Do this by clicking on the square next to the abbreviated source name.
- Next select the appropriate news filter.
  1. Filter by categories –
  2. Filter by keyword in headers
  3. Filter by keyword in Articles
- Set the time period in which you want news stories returned from.
  1. Limit news to a date range. The links next to from and to make it easy for you to select a date from the pop-up calendars.
  2. Limit news to last N days. Choose how many days back you would like news stories returned from.
 

This will roll the last day off each day and add a new day as it becomes available, so it is always looking at the same amount of days back.
- Click ok to generate a scrolling news feed.

### 8.2 Scrolling News Display Preferences

Change the layout of your Scrolling News window or edit the colors to make the window easier to read.

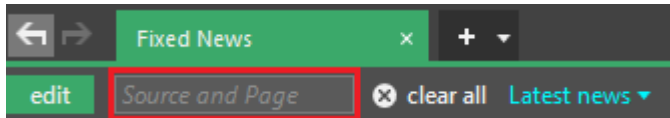
1. All display preferences are found in the cogwheel  in the top right of the window.



## 9. Fixed News

### 9.1 Fixed News Process

- Initiate a Fixed News window by clicking on the news drop down and selecting Fixed News.
- Click in the box that says “Source and Page”




- Explore the list of pages available starting with the source and diving deep into different commodities and locations.
- Search for specific news pages by typing directly into the text box.
- After selecting a news story you can view the most recent story by default or see a specific date by clicking on the blue link that says “Latest news”.

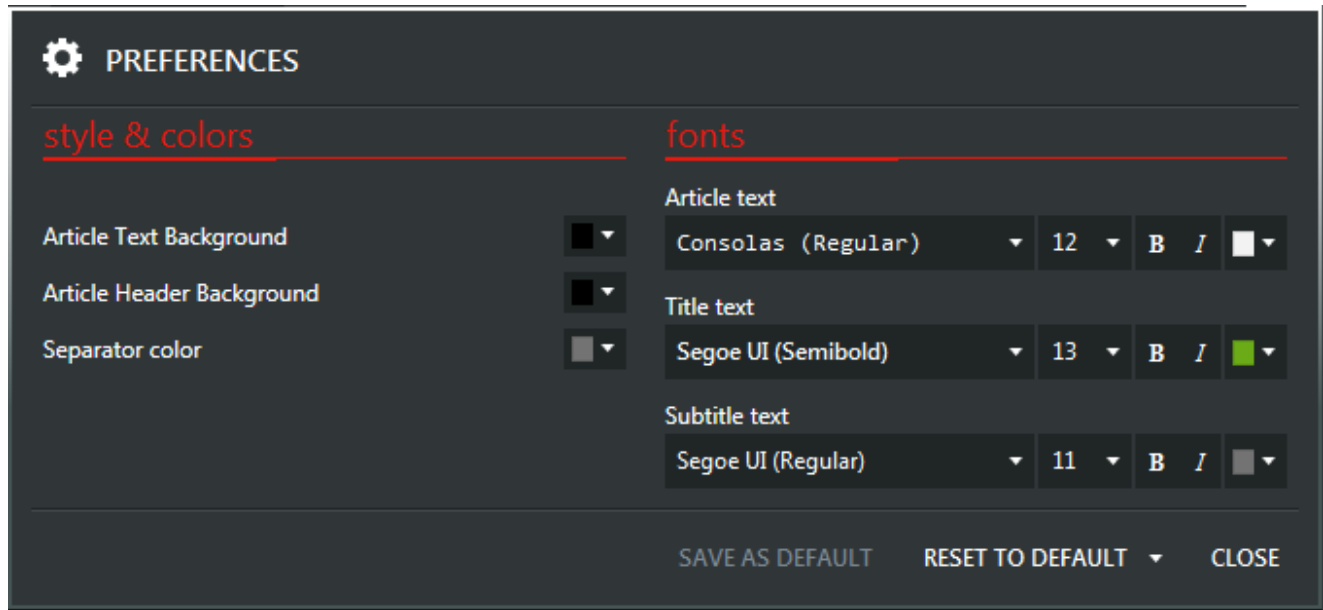


- Finally, click on the setting icon to set your display preferences like color and text size

### 9.2 Fixed News Display Preferences

Change the layout of your Fixed News window or edit the colors to make the window easier to read.

1. All display preferences are found in the cogwheel  in the top right of the window.



## 10. Alerts

Setting up an alert as follows:

- Open an Alerts window in your workspace by clicking the red underlined “ALERTS” tab at the top of your screen. All alert windows and controls are color-coded red for ease of identification.
- Double-click under the **Symbol** field to create a new alert. You will notice a checkmark in the “Enabled” column as well as a flashing cursor and dropdown menu appear.
- You can now type or paste your desired symbol into the **Symbol** field. Alternatively, the dropdown menu allows you to browse the symbol tree as well as your user-defined formulas.
- Designate the field that you would like your alert to monitor in the next column labeled **Field**. The **Above and Below** fields are used to set the values that trigger the alert. NOTE: As of the creation of this walkthrough, setting both **Above and Below** thresholds does not work. It is more reliable to set separate alerts for each.
- The **Frequency** field can be used to select whether the alert is only triggered one time or every time a contract trades within your alert parameters.
- If desired, type a custom message into the **Message** Field. If the Popup setting is turned on, your message will display in the popup window of your alert. Enabling the Speech option will read this message to you.
- Finally, if you would like a sound to accompany your alert – choose one from the dropdown menu in the **Sound** field.
- Your alert is now set and monitoring your selected field! For this example, when a NYMEX L.S.C.O Future is traded above \$45.00, the alert will display a pop-up window accompanied by a beep as shown below. NOTE: If you find that your alert is not functioning properly, first try clicking any field within the alert and pressing the “Enter” key on your keyboard.

Alerts

delete

Enabl...	Symbol	Field	Above	By	Below	By	Frequency	Message	Popup	Speech	Sound
✓	EEX Phelix DE Base Load Month F...	Last	Prev Last	0,01			Every Time		✓		None
✓	EEX Italian Base Load Month Futur...	Last			Prev Last	0,01	Every Time		✓		None
✓	EEX Phelix DE Base Load Month F...	Last	Prev Last	0,01			Every Time	HEY!	✓	✓	None
✓	EEX Phelix DE Base Load Month F...	Last			Prev Last	0,01	Every Time	ALERT	✓		None
✓	EEX Phelix DE Base Load Month F...	Ask	Prev Last	0,01			Every Time	Aufpassen	✓	✓	None

alerts

/E.FDBM<1> last less than prev last by 0,01

8/23/2019 11:23:39 AM

HEY!

8/23/2019 12:28:17 PM

/E.DEBM<1> last greater than prev last by 0,01

8/23/2019 12:28:17 PM

Aufpassen

8/23/2019 12:29:09 PM

ALERT

8/23/2019 12:15:23 PM

CLEAR ALL